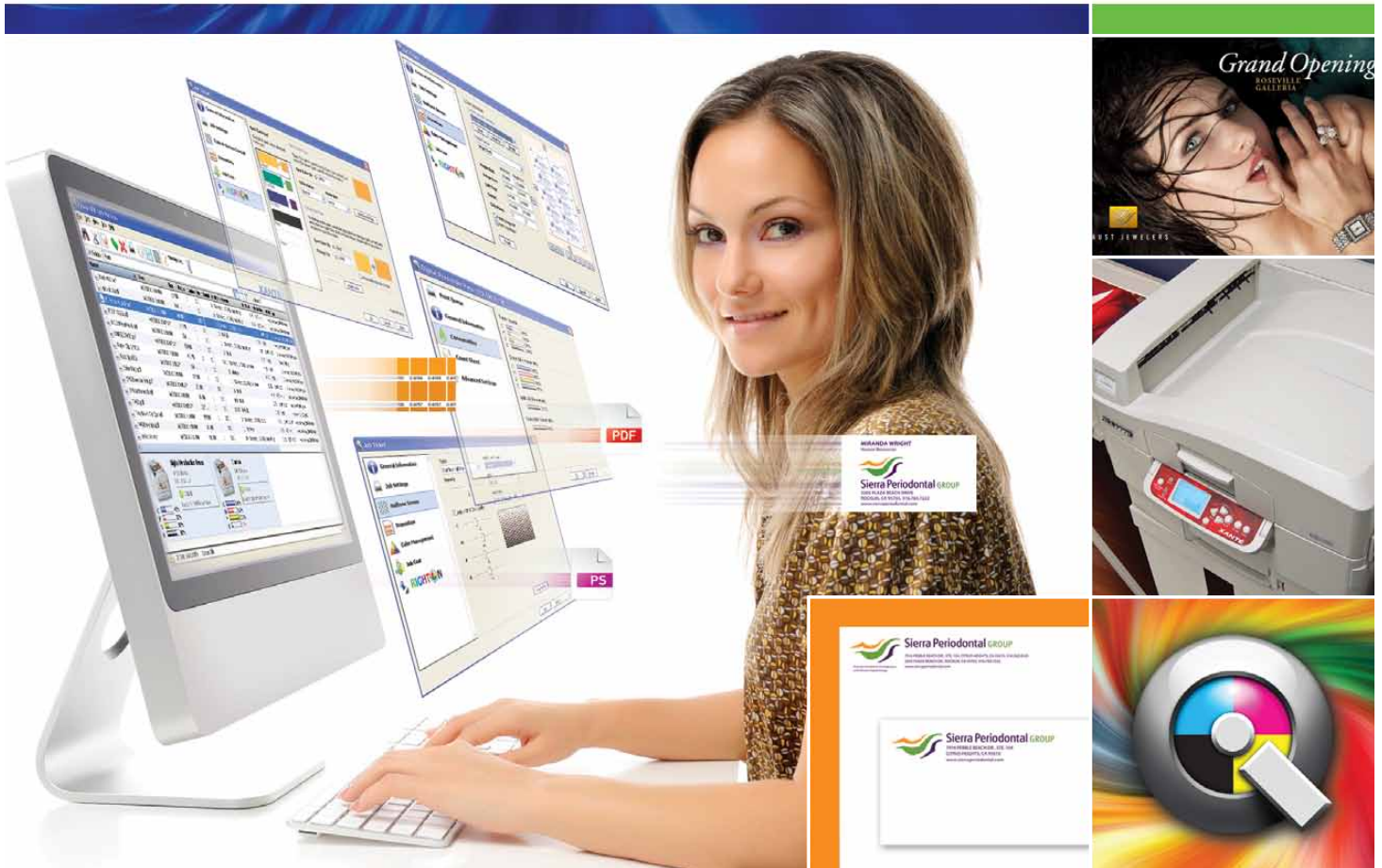


iQueue

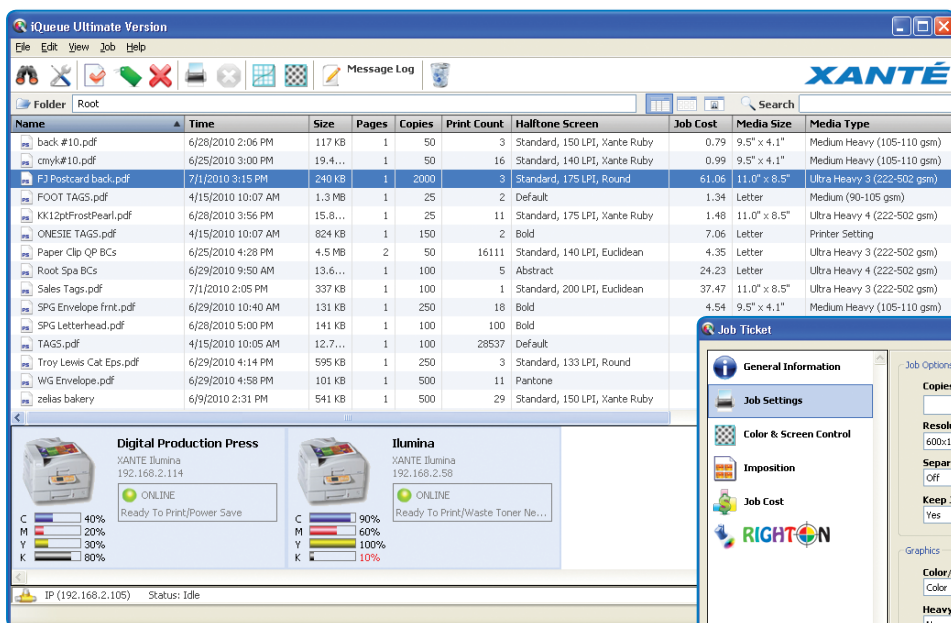
Prepress Workflow for Xanté Digital Color Printing and Mono Plate / Film Imaging Systems



- Increases prepress production and print quality
- Manage multiple jobs on multiple devices
- New Right-On spot color matching system
- Independent CMYK density adjustment
- Advanced screening options reduce waste
- Imposition / Plate Templating and more

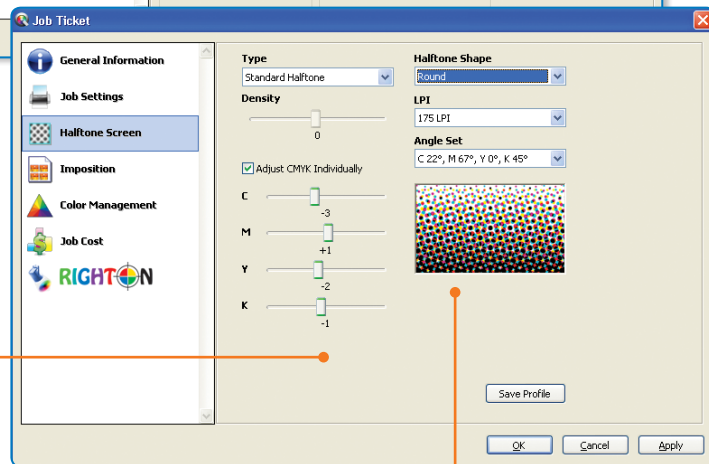
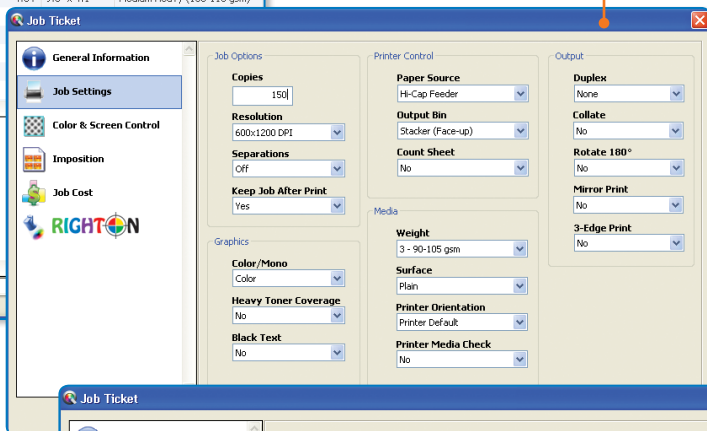
iQueue^{PRO}
iQueue^{ULTIMATE}

Now ILUMINA, PlateMaker, FilmMaker and ScreenWriter users can take control of their customer's digital files and deliver improved color print quality and plate / film imaging using the iQueue prepress workflow. iQueue makes it easy to manage multiple jobs and devices, apply color corrections, create custom density / screening profiles, apply imposition / plate templating, track run counts, job cost, monitor consumables, and more.



Job Ticket Editor

iQueue's job ticket editor allows users to setup digital files to suit work method and output device. Choose and apply: Media weight, surface type, page orientation, feed tray, color corrections / densities, resolution, linescreens, screening types, screen angles, run quantities, and much more.



The iQueue Prepress Workflow

New iQueue Professional and iQueue Ultimate are the latest editions of the automated prepress workflow designed specifically for Xanté Digital Color Printing and Mono Plate / Film Imaging Systems. iQueue offers new workflow enhancements and advanced features which allows users to manage multiple digital files, set job priorities, track run counts, monitor consumables, estimate job cost, and increase overall shop production, and output quality.

Independent CMYK Color / Density Control

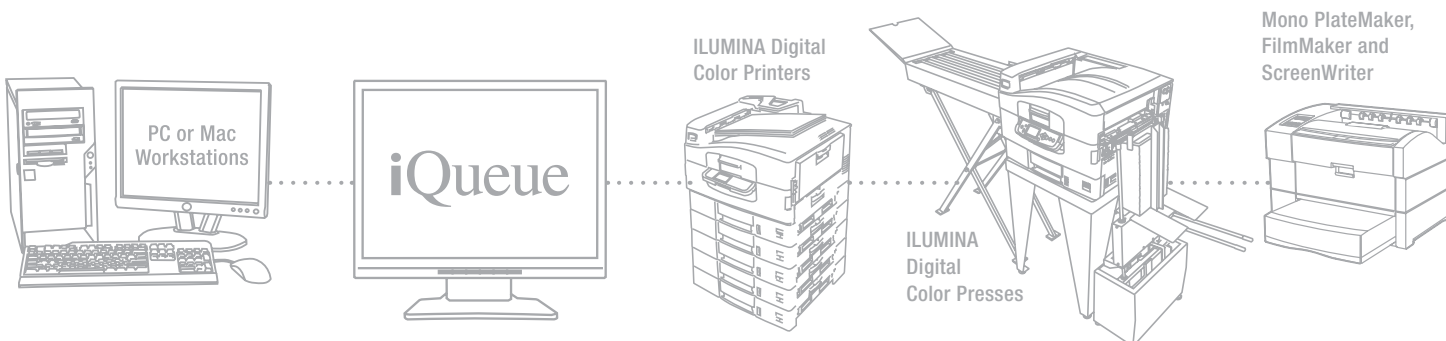
Many digital printing devices offer limited color and density adjustment options. iQueue Professional and Ultimate allows users to increase or decrease color density, or edit Cyan, Magenta, Yellow and Black individually.

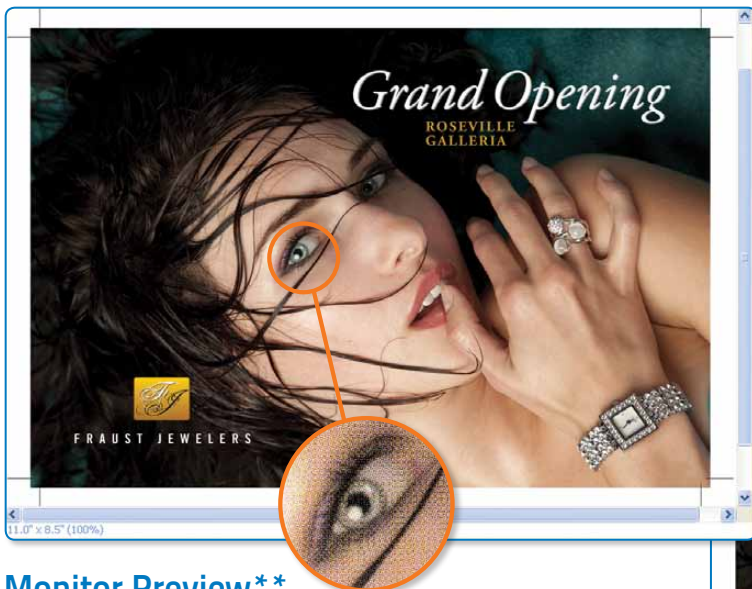
Networking: Sending digital files to iQueue

iQueue is a software application that can be installed on any networked PC (or a Pentium based Mac running Windows). Because iQueue broadcasts itself as an Adobe® Postscript printer, prepress operators can print directly to iQueue from networked Mac or PC workstations, using popular Adobe® / Microsoft® applications.

Screening Options

iQueue gives you a wide variety of screening options. Select the desired linescreen (from 10 lpi to 240 lpi), screen angle, and halftone shape (Round, Ellipse, Euclidean, Line, Dual Dot and more).





Monitor Preview**

(iQueue Ultimate) Allows you to see a preview of digital files before you print them. See file elements, marks, page orientation, and a simulation of the actual halftone dot shape / linescreen selected for each job.

Color Proofing

Color Proofing is quick and easy with iQueue. Simply click, print and review. Need to edit colors or density? No problem. Open the project's job ticket, make a quick adjustment and print another proof.

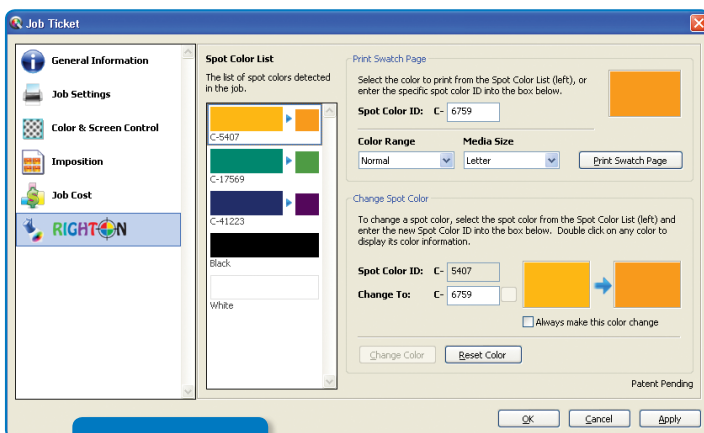


Automatic Scene Modes

iQueue contains a new concept in color adjustment called Scene Modes. Similar to screen modes of digital cameras, the 20+ modes were hand edited to give exceptional output quality targeted at specific image types. Simply select the desired scene mode profile and iQueue instantly applies the color / screening adjustments for you.



Spot Color Matching System



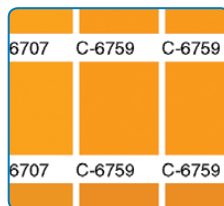
New



Bad
Standard
CMYK
Conversion

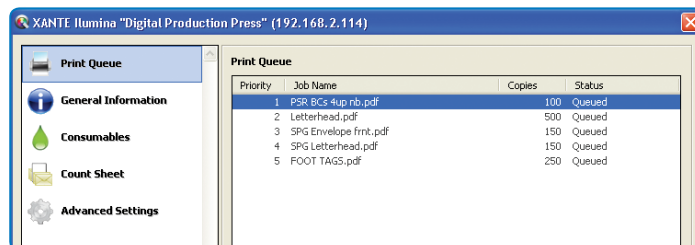


Spot Color
Matching
using Right-On



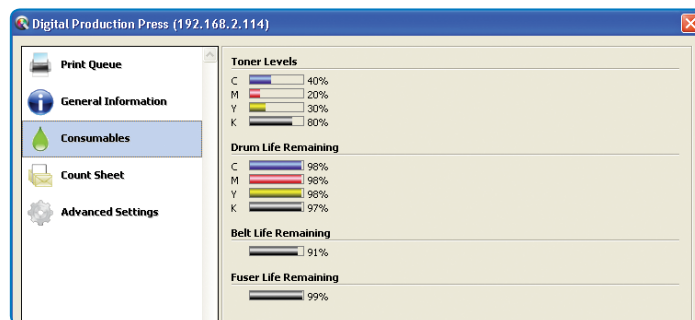
(iQueue Ultimate) The Right-On Spot Color Matching System uses a unique visual gamma comparison that allows users to make custom color corrections on the individual spot colors found in a digital file. No other spot color matching system gives you this much control over color conversions. Now you don't have to settle for old standard conversions that ultimately disappoint your customers and cost you money.





Print Queues

iQueue Print Queues allow you to control output to one or more networked ILUMINA Digital Color Presses and keep your production moving. Once a job is released (sent) to a specific ILUMINA, it is automatically placed in the associated Print Queue. Because iQueue allows you to edit all print queues, these jobs can be removed, changed, prioritized, placed on hold or even switched between print queues using the handy drag & drop feature.



Consumables Usage

iQueue makes it easy to monitor the consumables for each Xanté device in your network. Simply click on the Consumables Tab for a detailed view of toner levels, drum life, belt life, and fuser life for a specific, active ILUMINA.

Run Counts

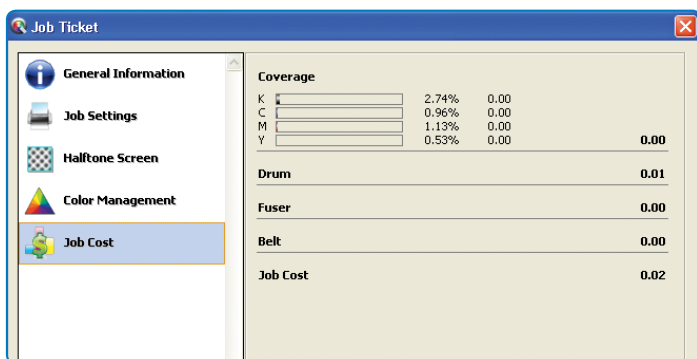
iQueue makes it easy to track the run counts of multiple jobs running on multiple ILUMINAs. iQueue's Job List allows you to view the desired print quantity and the actual printed piece count for all projects in iQueue. This makes it easy to stop a running job, print another, and later re-start the original project without losing the printed piece count.

iQueue's Count Sheet feature makes counting and gathering printed pieces faster than ever. Count sheets can be inserted after a specified quantity or at the end of the full run. You may also print progressive count numbers on your count sheets.



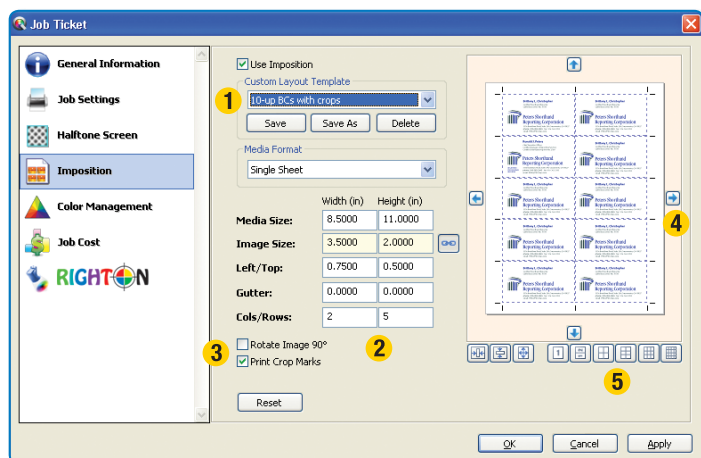
Job Archiving

Organizing and storing customer files in iQueue is a snap. Simply create a folder, then drag & drop all projects you want to keep for that customer. iQueue also saves important job settings (inside individual job tickets), so re-prints are as easy as click, print.



Job Cost Estimating

(iQueue Ultimate) Now iQueue takes the guess work out of job cost estimating. Simply double click on a project name to bring up the Job Ticket, enter the desired run quantity then click on the Job Cost Tab to see the estimated consumables cost.



iQueue Imposition / Plate Templating

(iQueue Ultimate) Now you can quickly impose digital files with single or multiple pages using iQueue's new Imposition feature. You can create and store custom imposition / plate templates to suit a wide variety of jobs ¹. Set the desired media / plate size, margins, gripper, number of columns and rows ², rotate the image, print (add) crop marks ³ and nudge the template ⁴. You may also select one of iQueue's standard imposition templates to automatically impose a variety of jobs ⁵.

XANTÉ

USA: 800.926.8839 / 251.473.6502 / xante.com
2800 Dauphin Street, Mobile, AL 36606

EU: +31 (0) 26 319 3210

Marketing 1 - 6921 RE Duiven, The Netherlands