

Canon

 **imageRUNNER**
1 7 5 0 / 1 7 5 0 iF
1 7 4 0 / 1 7 4 0 iF
1 7 3 0 / 1 7 3 0 iF

multifunction

ultra-compact design

black-and-white printer

color scanning

managed print services ready


OFFICE SOLUTIONS




At-a-Glance





imageRUNNER
 1750 / 1750iF
 1740 / 1740iF
 1730 / 1730iF

 Copy/Print/Send/Fax

 Up to 8-1/2" x 14"

 Up to 1200 x 1200 dpi

 Black and White

 Color Scanning

Powerful performance

- > Robust imageCHIP Lite system architecture
- > 512MB RAM
- > Standard Ethernet and USB 2.0 High Speed

Impressive speed

- > Up to 52/42/32 ppm printing (BW; Letter)
- > Up to 52/52/32 ipm scanning at 300 dpi (BW/Color)

Outstanding paper handling

- > Standard 100-sheet document feeder
- > Standard 550-sheet cassette with auto paper size detection
- > 100-sheet stack bypass tray
- > Envelope-feeding cassette option
- > Up to 2,300-sheet maximum paper capacity

Convenient finishing

- > Compact staple finisher option with 50-sheet corner-stapling
- > Standard 250-sheet output capacity
- > Maximum 500-sheet output capacity

Sophisticated Features

- > 5.7" QVGA adjustable black-and-white touch-panel
- > Standard Authentication at Send Operation (AuSend)
- > Serverless secured printing and proximity card options
- > Scan to USB/print from USB
- > USB keyboard support
- > Simplified installation and maintenance

Specifications

	imageRUNNER 1750iF/1740iF/1730iF	imageRUNNER 1750/1740/1730
Print	Standard: UFR II LT, PCL 5e/6 PostScript® 3™ Emulation	Standard: UFR II LT Optional: PCL 5e/6 PostScript 3 Emulation
Color Send	Standard	Standard
Searchable PDF	Standard	Optional: Color Send Searchable PDF Kit-E1
Fax	Standard	Optional: Single Line

A reliable way to achieve high-speed document workflows. Sophisticated, ultra-compact productivity that's easy to manage.

Deploy the fleet

Designed to meet the needs of enterprise workgroups and small- to mid-size businesses alike, the imageRUNNER 1700 Series is the ideal multifunctional solution for both individual and fleet deployments. IT administrators will value the ease of managing their MFP systems with Canon's array of tools, all designed to streamline operations. Remote offices and enterprises with large deployments that require a compact yet robust document production workhorse will appreciate the achievements in quality, reliability, ease of use and, above all, manageability with enterprise coherence.

A balanced approach

The imageRUNNER 1700 Series offers the right balance of performance, productivity, and low operating costs in several configurations that fit your requirements and budget—in more ways than one. End users will appreciate fast, high-quality output, color scanning, secured printing and sending, and available finishing. Business owners will enjoy the increased productivity enabled by Canon's streamlined interfaces, tools, drivers, and the ease of using them all.

Dependable performance

The imageRUNNER 1700 Series provides out-of-the-box productivity for fast output speeds and color "push" scanning that can be limited to authorized users. Each system has been built to last with significantly less maintenance—meaning less business interruption. Long-life components, generous paper capacity, and high-yield consumables dramatically increase system uptime, so you can focus on your work rather than attending to the MFP.

Small size, big productivity

Big capabilities in an ultra-compact size help make the imageRUNNER 1700 Series an ideal choice for small offices, front desks, remote locations, and groups of corporate users that don't require 11" x 17" output. Users and administrators alike will realize greater productivity through Canon's common desktop print drivers and management tools that automatically detect the available features of each system. Innovations in print engine design, document feeding, and internal finishing mean you'll also save precious space while unleashing workflow productivity in ways that were previously out of reach.

Do more with less

Lower IT costs and reduce the burden of managing your systems with Canon's powerful centralized management tools and remote access utilities. Whether your systems are self-managed or integrated within a managed print services infrastructure, the imageRUNNER 1700 Series is an ideal choice. Like all imageRUNNER systems, this Series can automatically issue maintenance alerts and status to internal recipients, or further reduce your overhead with automatic alerts sent to your Canon Authorized Dealer. Administrators can easily configure and monitor device status in real-time for any number of Canon MFPs throughout the enterprise and remote locations by distributing system settings, maintaining security privileges, and monitoring usage.

Even greener

Canon's commitment to protecting and sustaining the environment is stronger than ever. All new imageRUNNER systems incorporate environmentally responsible technologies that further conserve energy and resources, reduce CO₂ emissions, and help prevent pollution throughout the entire product life cycle.

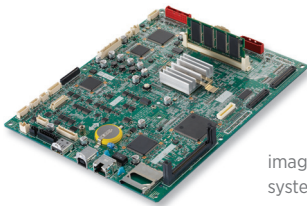


UNCOMPLICATED PERFORMANCE

Seize the features you need without sacrificing your valuable space—or budget.

Compact yet powerful

Built on the sophisticated and efficient imageCHIP Lite platform, the imageRUNNER 1700 Series includes ample RAM, built-in Ethernet, and USB 2.0 connectivity for scan-to and print-from memory media and available card-based authentication support. The Series also provides proven Canon performance for handling concurrent print, copy, scan, fax, and send jobs.



imageCHIP Lite
system architecture

The imageRUNNER 1700 Series supports high output speeds, a standard 550-sheet paper cassette that can automatically detect paper size, a 100-sheet stack bypass tray for additional media, and options for up to 2,300-sheet paper capacity. For more advanced paper handling without sacrificing additional space, the optional compact finisher quickly and automatically produces stapled documents to save you time while producing professional output. Good things really do come in small packages.

Intuitive interface

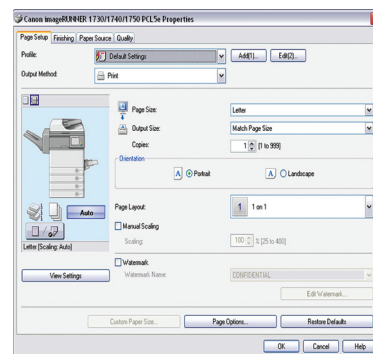
The imageRUNNER 1700 Series proudly features a large 5.7" high-contrast monochrome LCD touch-screen for enhanced usability—a unique feature in its class. The touch-panel viewing angle can be easily adjusted, so even mobility-impaired users can have quick access to all functionality. From the first touch, users will appreciate its ease of operation and responsiveness, while business owners will appreciate increases in employee productivity.



Articulating Screen
Fully adjustable screen accommodates all users and heights.

Flexible printing options

The imageRUNNER 1700 Series can output crisp documents with true 1200-dpi clarity. Each system includes support for Canon's innovative UFR II LT print technology for fast, reliable output. PCL 5e/6 and PostScript 3 Emulation support is standard on "iF" models and optional on Base models for Windows® and Macintosh® workstations. Canon's intuitive print driver is also smart, as it can recognize the capabilities of each system to provide users with only the options that are available. The Series also supports printing from Citrix® and SAP® environments to support business workflows.*



Print Driver User
Interface

High-quality color scanning

For everyday copies or scans, users can scan individual pages on the platen glass or quickly tackle a stack of single- or double-sided originals using the standard 100-sheet Duplexing Automatic Document Feeder. The color scanning unit uses a compact and lightweight high-precision reader that makes crisp, clear reproductions.



DADF
The standard DADF quickly scans up to 100 sheets in black and white or color.

* Check with SAP for SAP device type availability.

Document distribution

Increase your productivity with standard color sending capabilities that enable your imageRUNNER 1700 Series device to electronically distribute documents and save them to removable media. The systems support popular formats, including TIFF, JPEG, PDF, PDF High Compression, and Searchable PDF.*

Send. Easily distribute documents to e-mail, fax, I-fax, SMB, and FTP destinations, and even facilitate delivery to back-end applications and document management systems at the touch of a button. For an additional layer of security against data leakage, the standard AuSend feature can be enabled to prompt users for their credentials prior to accessing the Send screen.

Fax. Short on office space, but still need to fax? Consolidate your fax needs with your print, copy, and scan technologies to save space and operating costs. Canon has you covered with the available fax capability that's standard on "iF" models and optional on Base models. You can even send and receive paperless faxes at your networked computer, saving time and paper costs.

USB Support. The systems also go beyond traditional printers by supporting USB devices, such as memory media and optional keyboards and authentication card readers. Each system includes one USB port as standard, or you can connect up to three devices using an optional USB hub.

High reliability

Remote offices need reliable equipment since they may not be easily accessible by installation and support professionals. Likewise, larger offices are trying to trim costs and reduce demands on IT staff. The imageRUNNER 1700 Series makes it easy for organizations of any type and size to consolidate systems for easier maintenance and management through highly durable components and remote administration capabilities.

Long-life consumables

The imageRUNNER 1700 Series delivers a lower total cost of ownership through the high-yield imaging drum and toner, both of which are specifically designed for extended continuous operation. Canon's long-life drum technology also allows you to achieve more uptime, higher productivity, and better quality copies and prints. With separate drum and toner design instead of a single cartridge, you replace only the part necessary—reducing costs and environmental impact.



Front load access to consumables

Expandable features

Organizational goals and requirements change over time, which is why the imageRUNNER 1700 Series has been designed to provide an easier upgrade path to enhanced features. Instead of being locked into a system that's only good for today, Canon embraces growth by enabling new software and hardware capabilities that can be quickly installed as your needs expand.



Send format screen

Optional USB hub

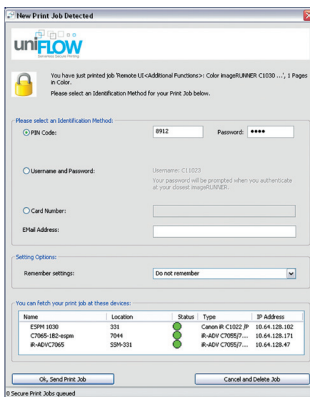
* Searchable PDF is standard on "iF" models and optional on Base models.

ALLOCATE YOUR RESOURCES WISELY

Streamlined administration saves precious time. Advanced technologies spare the environment.

Centralized control

Whether you're managing one imageRUNNER system or an entire fleet, Canon can help make it easier. Users and administrators can securely access the system over the network via a standard Web browser through the Remote UI. Larger numbers of imageRUNNER systems can be efficiently managed via the complementary imageWARE Enterprise Management Console Web-based application. Regardless of the method, managers can view system and consumables status and usage, as well as adjust configurations from across the network as needed. Canon's Generic PCL6 driver also simplifies management, giving IT administrators a single driver that supports multiple Canon systems to help drive costs out of IT operations.



uniFLOW Serverless
Secure Printing

Enhanced security and authentication

Protecting all connected devices on the network is important. Canon has provided the ability to limit access to the system as well as its printed output and send features to only authorized users. Additionally, the imageRUNNER 1700 Series can perform all its powerful functions without an internal hard disk drive, thus eliminating concerns over confidential data retained on the MFP.

Environments that require streamlined confidential or follow-me printing can choose the optional uniFLOW Serverless Secure Printing feature, which holds jobs at the desktop until the user is authenticated at any configured device prior to output.* For more sophisticated environments, a seamless upgrade to uniFLOW v5.0 provides a server-based solution for an unlimited number of devices with enhanced features and authentication capabilities.

Canon's User Authentication for Send feature is standard on all models in the imageRUNNER 1700 Series. User Authentication for Send is an embedded application that provides the ability to restrict usage of the Scan-to-E-mail, Scan-to-Fax, and Scan-to-File functions, while permitting everyday print and copy walk-up operations without hindering productivity.

Eco-conscious

As an industry leader in environmental responsibility, Canon is a partner to help achieve your green-conscious goals. The imageRUNNER 1700 Series is remarkably energy efficient, using approximately 1W of electricity in Sleep Mode and having a very low Typical Energy Consumption value. Yet Canon's technology can warm up quickly from this point to combine high productivity with minimal energy usage. With standard support for duplex printing, N-up printing, and Toner Save mode, these systems can easily save on the cost of consumables. From responsible manufacturing and smart transportation to reduced energy use and long-life consumables, Canon is dedicated to being a friend to both the environment and your budget.



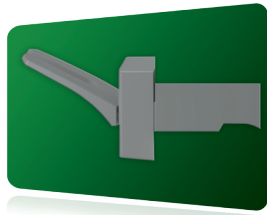
* uniFLOW Secure Serverless Printing includes support for up to five MFPs, a total of 50 users on a single subnet, and a maximum of 1,000 concurrent print jobs.

Enhance your productivity with an array of optional accessories.

Finishing Options

Staple Finisher-H1

- 500-sheet capacity
- Corner stapling up to 50 sheets



Connectivity Options

G3 Fax Board-AJ1*

PCL Printer Kit-AL1*

PS Printer Kit-AL1*

Color Send Searchable PDF Kit-E1*

Barcode Print Kit-B1 N**

USB Application 3-Port Interface Kit-B1**

uniFLOW Serverless Secure Printing Compact MFP License***

MiCard HID Prox Reader for uniFLOW SSP**



Paper Feeding Options

Cassette Module-Y1

- 550-sheet capacity
- 17 lb. Bond to 28 lb. Bond
- Supports up to 8½" x 14"

Cabinet Type-E (Small)†

Cabinet Type-F (Large)††

Envelope Cassette-D1†††

- 50-envelope capacity
- Supports COM10 No.10, Monarch, DL, and ISO-B5 to ISO-C5



Accessibility and Other Options

ADF Access Handle-A1

Braille Label Kit-F1

USB Keyboard (Cherry®)

Copy Card Reader-F1†



* Standard on 1750iF/1740iF/1730iF models.

** Requires PCL Printer Kit-AL1.

*** Supports up to 50 PC users.

† For use with 3 or 4 Cassettes installed. Cannot be used with Cabinet Type-F.

†† For use with 1 or 2 Cassettes installed. Cannot be used with Cabinet Type-E.

††† Installs in the optional second paper cassette; Cassette Module-Y1 required for use.

▲ Requires Copy Card Reader Attachment-C1.

▲▲ Copy Card Reader-F1, USB Application 3-Port Interface Kit-B1, and MiCard HID Prox Reader for uniFLOW SSP cannot be installed when Copy Card Reader-F1 is installed.

Note: For additional options and specifications, please refer to the back page.

Product Specifications

Main Unit

Operation Panel	
5.7" QVGA Black-and-White LCD Touch-Screen	
Memory	
Standard/	
Maximum:	512MB RAM
Network Interface Connection	
Ethernet 10/100Base-TX	
Other Interface	
Standard:	USB 2.0 (Host)x1, USB 2.0 (Device)x1
Copy/Print Speed (BW; Letter)	
1750/1750iF:	Up to 52 ppm
1740/1740iF:	Up to 42 ppm
1730/1730iF:	Up to 32 ppm
First-Copy-Out Time (Letter)	
5.0 Seconds	
Paper Sources (20 lb. Bond)	
Standard:	550-sheet Paper Cassette 100-sheet Stack Bypass
Optional:	550-sheet Paper Cassette Feeder (up to three)
Maximum:	2,300 Sheets
Output Paper Sizes	
Cassette 1/3/4: Legal, Letter, Statement, Executive	
Cassette 2:	Legal, Letter, Statement, Executive, Envelopes (COM10 No.10/Monarch/ DL/ISO-B5/ISO-C5) ^{△*}
Bypass:	Legal, Letter, Statement, Executive, Envelopes (COM10 No.10/Monarch/ DL/ISO-B5/ISO-C5), Custom Size [3-15/16" to 8-1/2" x 5-9/16" to 14-1/8" (99mm to 216mm x 140mm to 356mm)]
Acceptable Paper Weight	
Cassettes:	17 lb. Bond to 28 lb. Bond (64 to 105g/m ²)
Bypass:	17 lb. Bond to 34 lb. Bond (64 to 128g/m ²)
Duplexing	
Paper Size:	Standard Automatic Trayless Duplexing (Statement to Legal)
Paper Weight:	17 lb. Bond to 28 lb. Bond (64 to 105g/m ²)
Warm-up Time	
From Power On: 30 Seconds or Less	
From Sleep Mode:	10 Seconds or Less

Power Requirements	
1750/1750iF:	120V AC, 60Hz, 9.3A
1740/1740iF:	120V AC, 60Hz, 6.9A
1730/1730iF:	120V AC, 60Hz, 6.2A

Plug	
NEMA 5-15P	

Power Consumption	
Maximum: 1.5kW or Less; Sleep Mode: 1W	

Dimensions (H x W x D)	
24-7/8" x 22-1/8" x 19-3/4" (633mm x 560mm x 500mm)	

Installation Space (W x D)	
37-1/8" x 37-3/4" (941mm x 960mm) (with no optional equipment attached)	
50-1/4" x 37-3/4" (1276mm x 960mm) (with the optional Staple Finisher-HI attached)	

Weight	
Approximately 97.7 lb. (44.3kg)**	

Toner (Estimated Toner Yield)	
15,100 Images @ 6% Coverage	

Document Feeder

Scan Method	
Duplexing Automatic Document Feeder	

Acceptable Originals	
Paper Sizes:	Letter, Statement-R, Legal

Paper Weight:	BW Originals: 13 lb. Bond to 34 lb. Bond (50 to 128g/m ²)
	Color Originals: 17 lb. Bond to 34 lb. Bond (64 to 128g/m ²)

Scan Speed (BW/Color; Letter)	
Simplex:	1750/1750iF: 52/52 ipm (300 dpi) 1740/1740iF: 52/52 ipm (300 dpi) 1730/1730iF: 32/32 ipm (300 dpi)

Paper Capacity (20 lb. Bond)	
100 Sheets	

Print Specifications

Engine Resolution	
1200 x 1200 dpi (Maximum)	

Memory	
Standard:	512MB RAM
Optional:	512MB RAM

PDL Support	
Standard:	UFR II LT
Optional:	PCL 5e/6, PostScript 3 Emulated (standard on "iF" models)

Print Driver Supported OS	
UFR II LT, PostScript 3 Emulation:	Windows® (XP/Windows Vista®/ Windows 7/Server 2003/Server 2008/Server 2008 R2, Small Business Server 2011), Windows Terminal Servers (Windows 2000/Server 2003/Server 2008/ Server 2008 R2), Small Business Server 2011, Microsoft® Failover Cluster (Windows 2000 Server/ Server 2003/Server 2003 R2/ Server 2008/Server 2008 R2), Citrix (Presentation Server 4.5, XenApp 5.0/6.0, XenDesktop 2.0/2.1/3.0/4.0/5.0), Macintosh® (OS X 10.4.9 or later), VMware (vSphere 4), SAP (UFR II LT only)
PCL 5c/6:	Windows (XP/Windows Vista/ Windows 7/Server 2003/Server 2008/Server 2008 R2, Small Business Server 2011), Windows Terminal Servers (Windows 2000/ Server 2003/Server 2008/Server 2008 R2), Microsoft® Failover Cluster (Windows 2000 Server/ Server 2003/Server 2003 R2/ Server 2008/Server 2008 R2), Citrix (Presentation Server 4.5, XenApp 5.0/6.0, XenDesktop 2.0/2.1/3.0/4.0/5.0), VMware (vSphere 4), SAP

Color Send Specifications	
Sending Method	
E-Mail, I-Fax, File Server (FTP, SMB), Super G3 Fax (Fax standard on "iF" models, optional for Base models)	
Color Mode	
Color, BW	
Scan Resolution (dpi)	
BW:	600 x 600, 400 x 400, 300 x 300, 200 x 400, 200 x 200, 200 x 100, 150 x 150, 100 x 100
Color:	300 x 300, 200 x 200, 150 x 150, 100 x 100

Communication Protocol	
File:	FTP (TCP/IP), SMB (TCP/IP)
E-Mail/I-Fax:	SMTP, POP3, I-Fax (Simple)

File Format	
TIFF, JPEG, PDF, PDF (Compact), PDF (OCR),*** PDF (Compact + OCR)***	

I-Fax Data Format	
TIFF (MH)	

Fax Specifications (Standard on "iF" models, optional for Base models)

Number of Connection Lines	
1 (Maximum)	

Modem Speed	
Super G3:	33.6 Kbps
G3:	14.4 Kbps

Compression Method	
MH, MR, MMR, JBIG	

Sending/Recording Size	
Legal, Letter, Statement	

Security Specifications

Department ID Management, User ID Management, IPv6, Restricting Features (Restricting New Addresses on Address Book, Address Book Password, Allow Fax Driver TX, Restrict Recall, Confirm Entered Fax Numbers, Restrict Sequential Broadcast, Restrict USB Interface), Memory Lock, MAC/IP Address Filtering, SMTP Authentication, POP Authentication before SMTP, IEEE802.1x, Authentication Feature for Send Operation (AuSend), uniFLOW Serverless Secure Printing, Secured Print**

Other Optional Accessories

- Copy Control Interface Cable-A1***
- △ The optional Envelope Cassette-D1 is required.
- * Installs on the second paper cassette and requires optional Cassette Module-Y1.
- ** Excludes toner cartridges.
- *** The optional Color Send Searchable PDF Kit-E1 is required for Base models.
- △ Available option.
- △△ Check with your Canon Authorized Dealer for availability.
- Copy Card Reader-F1 and Copy Control Interface Cable-A1 cannot be installed at the same time.
- *** Copy Control Interface Cable-A1, USB Application 3-Port Interface Kit-B1, and MiCard v2 HID Prox for uniFLOW SSP cannot be installed when Copy Card Reader-F1 is installed.

NOTE: Please see page 7 for more optional accessories.



1-800-OK-CANON
www.usa.canon.com

Canon U.S.A., Inc.
One Canon Plaza
Lake Success, NY 11042

As an ENERGY STAR® Partner, Canon U.S.A., Inc. has determined that these products meet the ENERGY STAR guidelines for energy efficiency. ENERGY STAR and the ENERGY STAR mark are registered U.S. marks. CANON, IMAGERUNNER, and the GENUINE logo are registered trademarks of Canon Inc. in the United States and may also be registered trademarks or trademarks in other countries. IMAGEWARE is a trademark of Canon U.S.A., Inc. in the United States and is a trademark of Canon Inc. in certain other countries. IMAGEANYWARE is a trademark of Canon. All other referenced product names and marks are trademarks of their respective owners and are hereby acknowledged. Some items may not be available at this time; please check for availability. Specifications and availability subject to change without notice. All printer output images are simulated.
©2011 Canon U.S.A., Inc. All rights reserved.

