

SafeCom Product Brochure

D10920-03

June 2012

printcool

measurable software solutions

t +27 (0)11 367 0616
building 1, prism business park,
ruby str, fourways, johannesburg
south africa.

www.printsol.co.za

SafeCom.eu

Trademarks: SafeCom, SafeCom Go, SafeCom P:Go, SafeCom OnLDAP, SafeCom ePay and the SafeCom logo are trademarks of SafeCom a/s. Company and product names mentioned in this manual are trademarks or registered trademarks of their respective owners. SafeCom a/s cannot be held responsible for any technical or typographical errors and reserves the right to make changes to products and documentation without prior notification.

Patent: SafeCom has received the following British patent GB 2350 713 B, US patent US 6,952,780 B2 and Europe EUR EP1 120 701.

Purpose: the purpose of this document is to help you to more easily write large proposals. The tender template includes description of the entire SafeCom offering. You can pick and choose the text elements and illustrations best suited for your purposes.

If this document is sent to the customer in some form, please remember to update the Table of contents

© Copyright 1999 - 2012 SafeCom a/s



Table of Contents

1	SafeCom Smart Printing™	4
1.1	Infrastructure Consolidation	4
1.2	Reduce Consumable Usage	5
1.3	Confidential Printing	5
1.4	Efficient IT Management	6
1.5	Accurate Cost Allocation.....	6
2	SafeCom - a benefit to the entire organization	7
2.1	Overall Company Benefits	7
2.2	Employees	7
2.3	IT Department	7
2.4	Procurement	8
3	Solutions Overview	9
4	SafeCom Products	10
4.1	SafeCom Print Tracker	10
4.2	SafeCom Go	11
4.2.1	Methods to enable SafeCom Go.....	13
4.3	SafeCom Controller	14
4.4	Authentication.....	15
5	SafeCom Components	16
5.1	SafeCom Server Components.....	16
5.1.1	SafeCom G3 Server	16
5.1.2	SafeCom Cluster Server	17
5.1.3	SafeCom G3 Web Interface	17
5.1.4	SafeCom Reports	17
5.1.5	Disaster Recovery	17
5.1.6	SafeCom API	18
5.2	Workstation Components	18
5.2.1	SafeCom Print Client.....	18
5.2.2	SafeCom PopUp	19
5.3	Device Modules	19
5.3.1	SafeCom Pull Print	19
5.3.2	SafeCom Tracking	20
5.3.3	SafeCom Rule Based Printing.....	21
5.3.4	SafeCom Client Billing	21
5.3.5	SafeCom Pay	22
6	Support Service	23
6.1	SafeCom support center	23
7	Customers	24
8	Related resources	25
9	SafeCom Go User interfaces per printer vendor	26

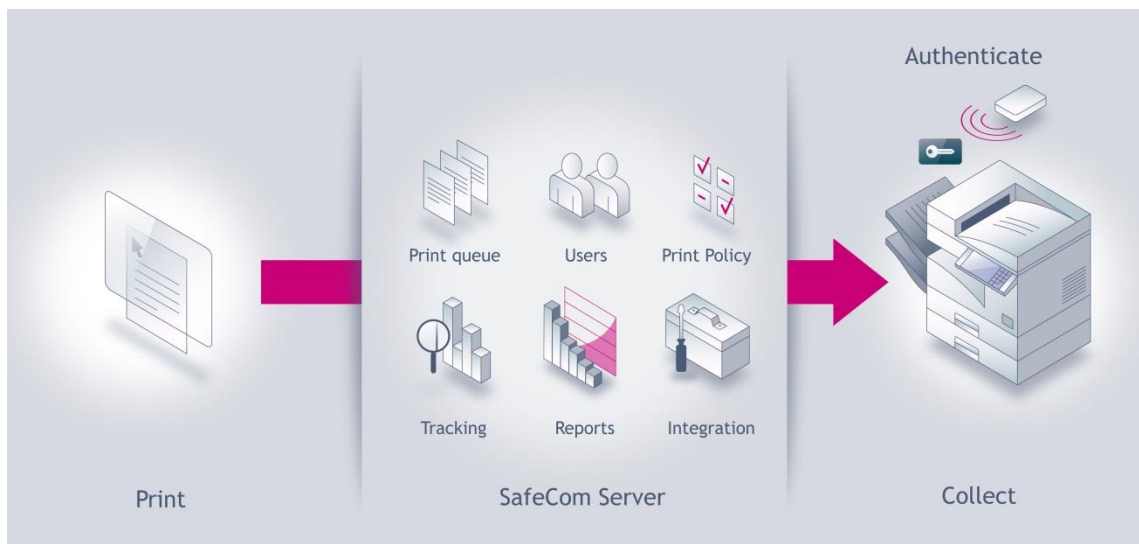
1

SafeCom Smart Printing™

Finance and IT managers know they must consolidate, standardize, and control their printing operations in order to reduce costs and simplify working patterns. In addition, their employees must be able to print safely anytime, anywhere at any printer of their choice. SafeCom Smart Printing™ directly addresses the challenges that companies face every day through:

- Infrastructure consolidation
- Reducing consumable usage
- Confidential Printing
- Efficient IT management
- Accurate cost allocation

How does it work?



Any SafeCom-enabled network MFP or printer combined with the SafeCom Server and a SafeCom ID Device enables the central administration and control of all print, copy, scan, fax and e-mail activities. Users send their print and then authenticate at any network MFP or printer to retrieve it.

1.1 Infrastructure Consolidation

SafeCom enables the consolidation and standardization of your print environment in two ways:

No need for personal printers

SafeCom Pull Print turns all network printers into a personal printer, allowing you to consolidate the printer fleet and eliminate the need for personal printers. Users send their print and then go to any network printer to authenticate and retrieve their print jobs at a convenient time.

Reduce number of print servers

SafeCom Print Client makes it possible to drastically reduce the number of print servers for enterprises with remote offices and limited network bandwidth.

Pending print jobs are stored locally on the users' computers until the designated recipients authenticate and retrieve their print jobs. This removes print data traffic from the corporate network and eliminates the need for dedicated print servers.

1.2 Reduce Consumable Usage

SafeCom Pull Print and Policy Management provide rapid cost reductions through direct solutions to typical print, copy and scan-related problems.

Let the users decide - save 15%

Pull Print allows users to decide which print jobs to print, when and where. Automatic deletion of forgotten print jobs is optional, and, if enabled, forgotten print jobs are deleted automatically after notifying the user.

Pull Print is very effective for eliminating piles of forgotten or rejected prints - saving the company up to 15% on wasted paper and toner.

Motivate and manage change - save 25%

SafeCom supports the management of print policies regarding printing and copying in color, duplex printing and redirecting output to the most cost-efficient devices.

Users often ask for this, so policy enforcement is directed toward motivating and managing changes in order to save money and conducting an environmentally-friendly business.

1.3 Confidential Printing

Large enterprises normally produce a vast number of documents that need to be printed, scanned, faxed or copied. At the same time, network printers and multi-function devices have become more intelligent and play a key role in the handling of documents. For these reasons, more and more companies focus on protecting output and devices.

Your customers rely on you

Impeccable security must be provided to ensure that confidential documents are not viewed by the wrong people, misplaced or lost. Some clients might even ask for the use of recognized security systems and methods for the handling of documents.

Secure and widely accepted

Companies using SafeCom can provide a reassuring demonstration of a widely accepted secure printing and access control solution used by enterprises across the world in finance, government, pharmaceuticals, healthcare, education, retail, media, telecommunication, services and manufacturing.

Encryption is standard

Encryption of print data is standard in a SafeCom Secure Printing solution and covers both the SafeCom server and user PCs to facilitate PC-to-printer encryption. Full protection of the print process can thereby be guaranteed from the PC, to the

server, and then all the way to the printer device where the authenticated user retrieves the print job.

1.4 Efficient IT Management

The SafeCom Administrator is your tool for reducing printer administration and IT costs. It is the central control center of the SafeCom Solution. The SafeCom Administrator enables complete control of even a large printer fleet using a minimum of resources. You will always be in control of who prints what, when, where and how.

Central Administration

IT staff centrally manages and controls the entire printing environment, i.e., its users, printers, and MFPs. They can support all the company's print queues, remove cancelled jobs or troubleshoot remote sites from their central location.

Automate processes

Many operations can be set for automatic processing, such as deletion of old jobs and status reporting. Companies can scale down their many printer queues, or even create a single queue for all printers, thereby simplifying administration and support and increasing help-desk efficiency.

Gain Insight and control

SafeCom Tracking works as a valuable supplement to the central management function through its reports and complete overview of all print and copy activities - including the Save-O-Meter that tells you how much you have saved.

1.5 Accurate Cost Allocation

Robust audit trail

SafeCom Tracking and standard reporting capabilities make it possible to gain a clear overview of your company's print, copy, scan, fax and e-mail activities, usage behaviour and costs.

Full control and cost recovery

User profiles are defined centrally, and all printing activities and costs can be tracked down to the individual user. SafeCom enables central charging schemes for all types of documents, allowing for accurate internal or external cost allocation.

It is possible to track printer usage at all times and extract reports on each unit's costs in order to control printing expenses, no matter how large the organization.

Pay solutions

SafeCom provides solutions that enable universities, libraries and other public institutions to offer print services on a straightforward Pay-for-Print basis, allowing them to cover costs or even clear a profit on their printing facilities.

2 SafeCom - a benefit to the entire organization

SafeCom Smart Printing™ benefits the entire organization:

2.1 Overall Company Benefits

Reduce print costs by 40% or more

Pull Print lets users decide which documents to print or delete, and forgotten print jobs are deleted automatically - saving the company 15% on wasted paper and toner. Managing print policies through the optimization of duplex and color printing saves the company 25%.

Protect output and devices

Users can print their documents safely, anytime and anywhere at the printer of their choice. User authentication prevents the unauthorized use of network printers for printing, copying, scanning and e-mailing.

Eliminate waste

Pull Print, authentication and policy compliance will help eliminate waste and reduce consumables usage dramatically - up to 40% or more.

2.2 Employees

Print safely anytime, anywhere

Pull Print gives employees more flexibility and mobility since they no longer need to rush to the printer immediately to collect their printed documents. Documents are printed and collected at the user's convenience.

Go to the printer of your choice

Users are free to collect their documents at the network printer best suited for the print job. Or they can simply go to the closest printer and retrieve their document.

Avoid lost documents

Users go to the printer to authenticate and collect their documents. This ensures that users are present to collect their documents when they are being printed - thereby avoiding any accumulation of forgotten print jobs.

2.3 IT Department

Simplify print infrastructure

Consolidation of printers and print servers reduces support and maintenance costs. In the process, companies standardize printer fleets and infrastructure which improves efficiency and procurement processes.

Improve help-desk efficiency

Consolidation, combined with central administration of users and devices, makes the task of supporting users much easier for the IT department. At the same time users will experience a higher level of availability.

Free up IT resources

Print infrastructure consolidation and effective tools to manage printers and users will result in less time spent on administration and support, freeing up IT resources for more strategic projects.

2.4 Procurement

Centralize cost control

Central administration allows procurement departments to monitor investments and operational costs.

Accurate cost allocation

Central tracking of print, copy, scan, fax and e-mail activities down to individual users or departments enables accurate cost allocation both internally and externally.

3 Solutions Overview

SafeCom Smart Printing™ is the secure printing and document accounting solution most companies need to control and optimize their print environment.

Any SafeCom enabled network printer combined with SafeCom Server software provides:

- **Central Administration** of users and devices to optimize operations
- **Document Accounting** of all print, copy, fax, e-mail and scan activities
- **Access Control** protecting devices and ensuring confidential printing
- **Policy Compliance** motivating changes in user behavior and reducing waste.

SafeCom Smart Printing™ is an open universe of possibilities. It is built on a foundation that allows choice of optional core components. The system can be configured with a customized set of functionalities and modules to create the exact solution matching your specific requirements.



Overview of SafeCom Smart Printing core components and optional modules

4 SafeCom Products

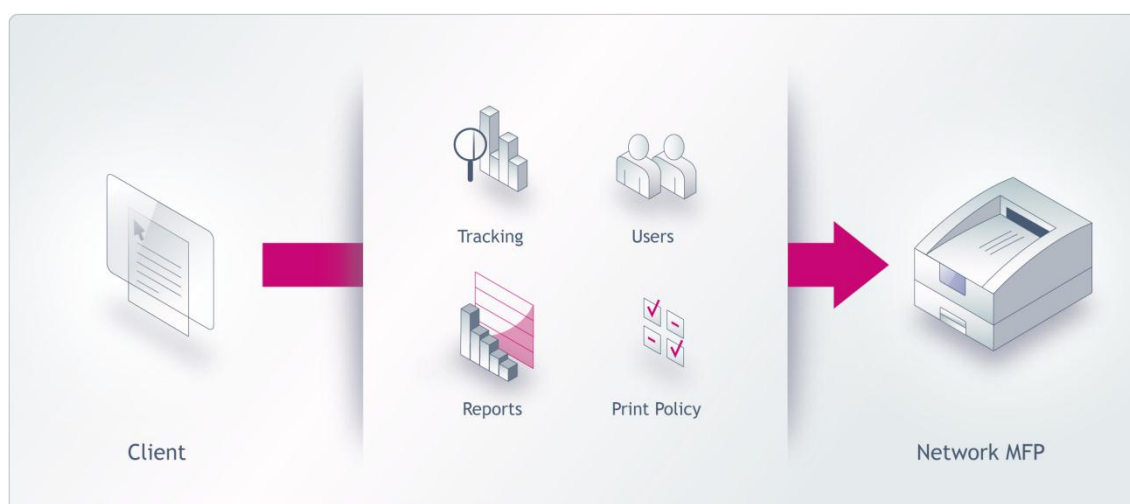
SafeCom offers three products that can be combined with functionality on the server and the devices:

- The benchmark and monitoring tool **SafeCom Print Tracker**.
- The **SafeCom Go series** with manufacturer specific solutions that utilize the built-in display on the MFP or printer.
- The external **SafeCom Controller** SafeCom enables printer and MFP models not supported by SafeCom Go.

4.1 SafeCom Print Tracker

Software based print management tool

The SafeCom Print Tracker combines central tracking and presentation of print data with tools to optimize duplex and color printing. This central print management system helps companies change user behavior and save up to 25% on wasted paper and toner.



SafeCom Print Tracker combines central tracking and reporting of all print activities with the tools to manage the company's print policy.

Gain Insight

With the SafeCom Print Tracker installed on the print server, all print activities will be registered down to the individual users, providing an overview of print volumes, duplex and color print ratios.

Based on the tracking data, SafeCom Report lets you produce relevant, predefined reports enabling you to improve print services and reduce costs.

Control and policy compliance

SafeCom Print Tracker with Rule Based Printing enables management of print policies and procedures regarding printing in color, duplex printing and channeling output to cost-optimal devices. This is a flexible way to motivate and manage changes in user behavior. Policies are administered through a user-friendly interface allowing an

administrator to adapt policies to match changes, user requirements, business needs and budgets.

Allocate and invoice costs

With the Print Tracker Client Billing module users assign billing codes to their print jobs. Billing codes and print jobs are associated either when the user hits print or afterwards through the SafeCom Web Interface. With Client Billing activated it is possible to allocate and charge print costs to customers or internal departments.

Charging up front

Educational institutions can charge students for printing with the Print Tracker Pay module. When students hit the print button a pop-up asks them to accept the price for the print job that is immediately printed after acceptance.

SafeCom Print Tracker only monitors printers with direct printing (Push Print). It cannot be combined with SafeCom Pull Print.

4.2 SafeCom Go

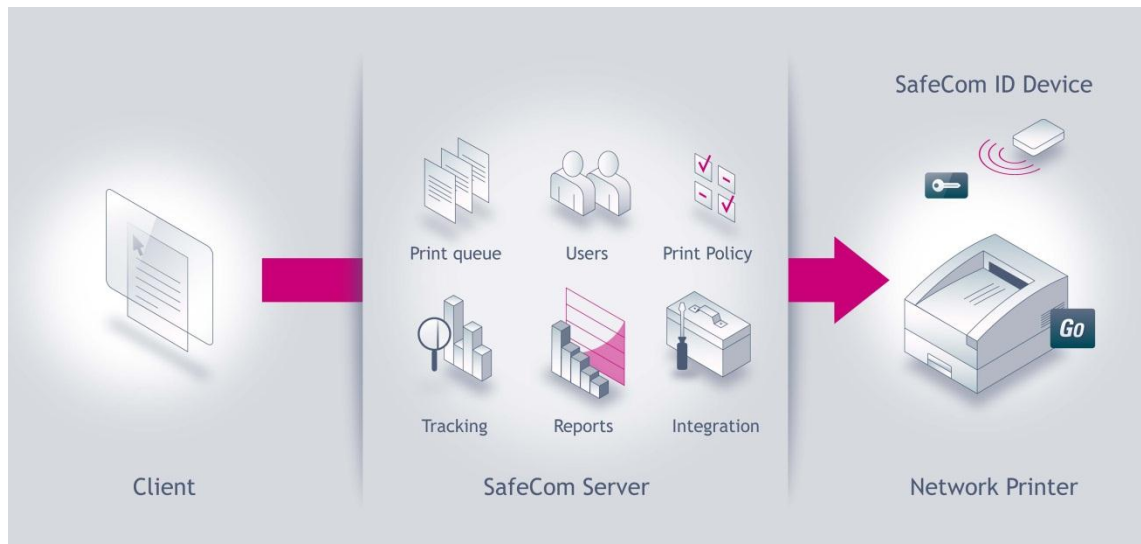
Integrated secure printing and document accounting



SafeCom Go and SafeCom P:Go is SafeCom Smart Printing™ built into multifunction printers and printers. It is an integrated software solution that utilizes the built-in display on the device. SafeCom Go controls access to MFPs and printers because users are requested to log in (authenticate) before they gain access to the device.

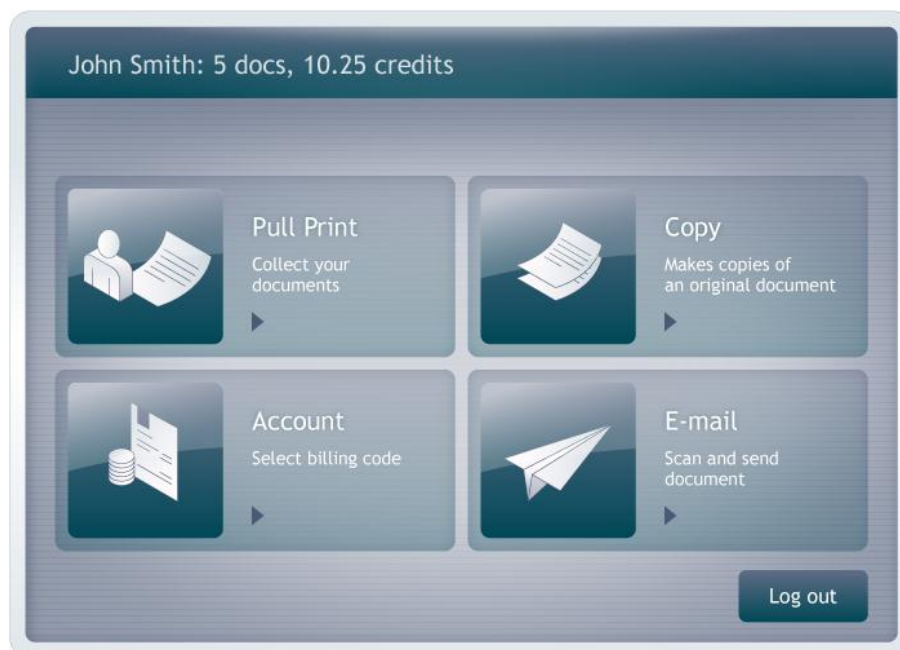


SafeCom Go provides secure printing and access control- users send their print and then authenticate at any SafeCom-enabled network MFP to retrieve it. The SafeCom Server enables central administration, document accounting and policy enforcement. Authentication using cards requires an ID Device.



SafeCom P:Go provides secure printing and access control- users send their print and then authenticate at any SafeCom-enabled network printer to retrieve it. The SafeCom Server enables central administration, document accounting and policy enforcement. Authentication using cards requires an ID Device.

The user interface at the MFP



SafeCom go is available for MFPs and printers from these manufacturers:

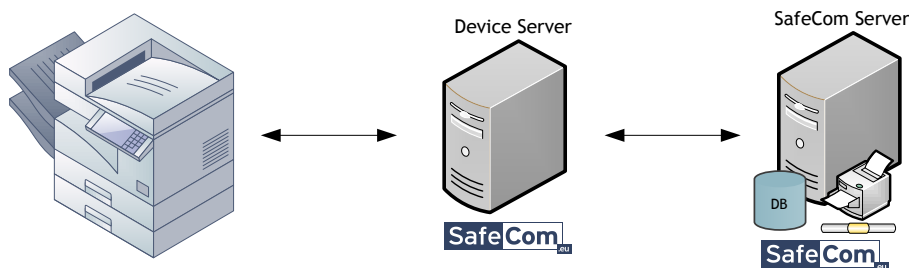
- Canon
- HP
- Konica Minolta
- Lexmark
- Océ
- Ricoh
- Sharp
- Xerox

4.2.1 Methods to enable SafeCom Go

There are three ways to SafeCom Go enable a printer or MFP. The method depends on the specific printer manufacturer and model.

SafeCom Go / Device server

With SafeCom device server a dedicated server administers up to 100 devices. The only installation required at the device is a card reader if cards are used for authentication.



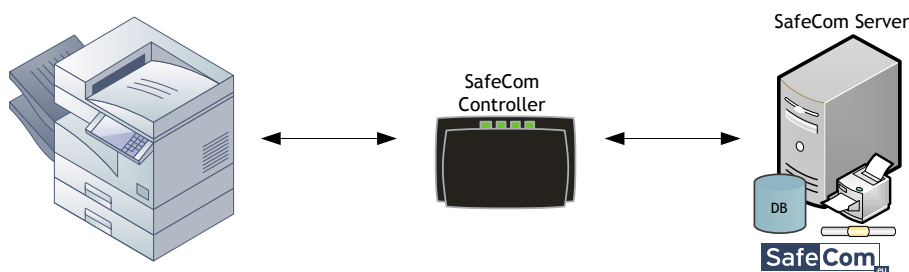
SafeCom Go in device

Enabling SafeCom Go in the device usually includes a software installation in the device and reader mounting (if cards are used for authentication). On some models special kits from the vendors are required.



SafeCom Go / Controller

On some printer labels SafeCom Go must be enabled through a SafeCom Controller. This way of SafeCom enabling the device distinguishes itself from the external controller solution because it utilizes the built in display on the device.



More information

For more information and details about supported features and functionality on specific models please consult the “SafeCom Device Functionality Overview D10940” document. It can be downloaded from [SafeCom Insite](#).

4.3 SafeCom Controller

A vendor independent solution



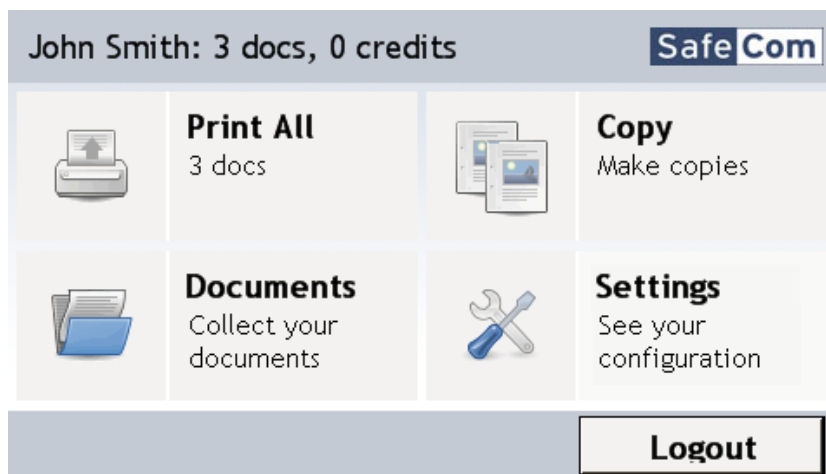
A SafeCom solution with a SafeCom Controller is independent of printer models and provides the freedom to change between printer providers. The SafeCom Controller gives access control on any network printer or MFP. Users log in with card and/or code.

A SafeCom Controller combined with a SafeCom Front-end gives the best possible user experience that resembles the SafeCom Go solutions. It is operated via the display on the Front-end. A SafeCom Controller equipped with a SafeCom card reader is possible. In this case all documents waiting will be printed at login.



SafeCom Controller provides secure printing and access control - users send their print and then authenticate at any SafeCom-enabled network MFP or printer to retrieve it. The SafeCom Server enables central administration, document accounting and policy enforcement. Authentication using cards requires an ID Device.

The user scenario



The welcome screen on a SafeCom Front-end.

Copy Control - MFP Cables

With a SafeCom Controller it is possible to track print and copy as well as charging for these job types with SafeCom Pay and Client Billing. When tracking of copies is a requirement a MFP cable is required. Copy tracking is possible on selected MFPs from:

- Canon
- HP (FIH port)
- Konica Minolta (Bizhub and 70xx, 71xx, 72xx)
- Kyocera Mita
- Océ (CS and VarioPrint)
- Panasonic
- Ricoh
- Sharp (AR, MX and MX-M)
- Xerox.

The complete list of supported devices is available on www.safecom.eu.

4.4 Authentication



Users have to authenticate themselves when they log in at the device. Authentication is when the SafeCom Server identifies a user as a recognized and approved user of the system and output device. Authentication protects against misuse and unauthorized use of company MFPs and printers.

Users can authenticate and log in using ID code, Windows Login or ID cards and tags.

Code

Users enter their personal code, and if required a PIN-code to log in. On SafeCom Go solutions this requires no additional hardware.

Windows Login

With Windows Login users can use the same code to log into their computer and MFPs and printers. On SafeCom Go solutions this requires no additional hardware.

Cards and Tags

SafeCom solutions support a wide range of ID technologies. New technologies are added continuously. ID technologies are listed below.

Available SafeCom ID Technologies

Please refer to the datasheet “[SafeCom ID Technologies](#)” for more information about readers and ID technologies.

5 SafeCom Components

5.1 SafeCom Server Components

The SafeCom Server software is the heart of every SafeCom solution.

5.1.1 SafeCom G3 Server

The SafeCom G3 server contains the main printer control intelligence and provides the tools to efficiently manage your printing environment. SafeCom Server software is designed and built for reliable, stable performance along with consistently high availability. SafeCom solutions can be configured and adapted to any print environment, whether in small company offices or large enterprises.

SafeCom Advanced Server - single server solution

SafeCom Advanced Server software is designed for small to midsize companies. A general guideline for its capacity is 100 million printed pages per month or 200 connected print devices.

Enterprise Server - multi server solution

The SafeCom Enterprise Server software is designed for large organizations with large print volumes, thousands of users, hundreds of printers, numerous print servers or multiple sites with central print management.

The SafeCom solution controls the entire printing environment through a single master server and a number of slave servers providing the company with all the benefits of central print administration.

A SafeCom multi server solution lets employees pick up their documents at any SafeCom-enabled printer or MFP no matter where on the network the documents originate. This way employees gain full mobility across regional or national offices.

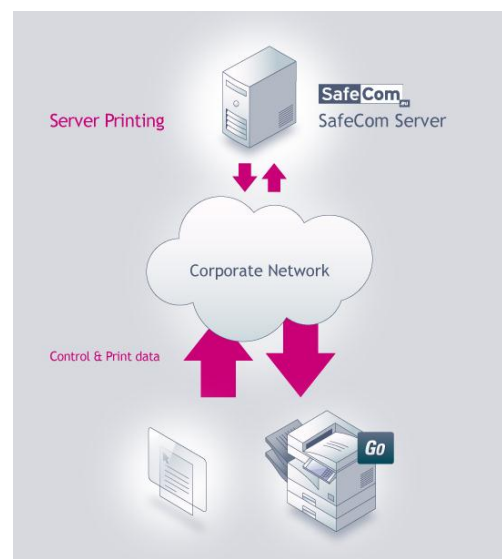
A SafeCom multi server solution is designed for optimal utilization of bandwidth. Data is only exchanged between servers when absolutely necessary, and daily updates and synchronization can be scheduled for periods with low data traffic.

Server Printing

When server printing is used the SafeCom server acts as print server and hosts shared printers.

When the user prints, the document is transferred to the user's home server. The document remains on the server until the user authenticates at a print device to collect it.

Server printing is relevant for companies that want a centralized print solution where printing is done via shared printers on servers.



5.1.2 SafeCom Cluster Server

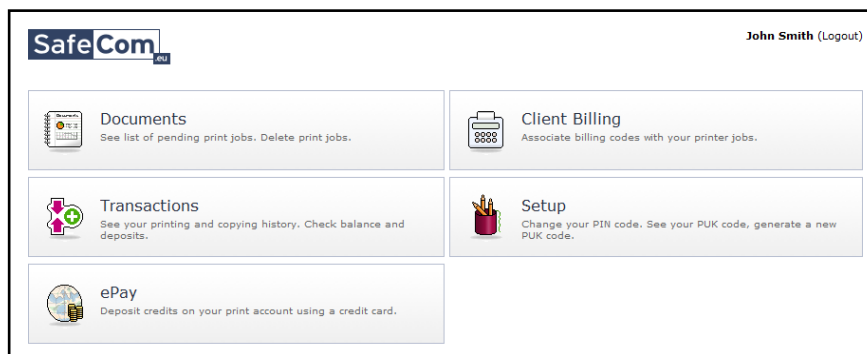
SafeCom Cluster Server is your insurance for the most reliable and robust print solution. SafeCom Cluster Server is an add-on for the SafeCom server and can work on both single and multi server solutions. SafeCom Cluster Server runs with Microsoft Cluster Service.

A SafeCom Cluster Server solution consists of two or more "nodes," one active and the other passive. If the active node suddenly stops, the passive takes over immediately so users can still print and are not affected by a breakdown.

5.1.3 SafeCom G3 Web Interface

Users can serve themselves via the SafeCom Web Interface. It is a personal web page where users can get an overview of their print and copy history through a web browser. Employees can use the SafeCom Web Interface to see a list of their documents on the print server. They can also delete documents that they do not need to print any more.

Client Billing users can manage their list of favorite codes and select billing codes for jobs and Pay users can see their transactions and top up their account through the browser. In addition, the SafeCom Web Interface lets users change their PIN-code or generate a new PUK-code.



5.1.4 SafeCom Reports

SafeCom Reports is a free add-on module for the SafeCom server. SafeCom Reports provides a user-friendly overview covering all tracked data that is gathered in the tracking database - for example, print and copy, activity per department or user, utilization and load on printers, use of color/mono, and an overview of the most used applications (in terms of printed pages of paper).

SafeCom Reports is based on Crystal Reports from Business Objects. It can either be installed with the SafeCom server or on an individual computer. The reports can be exported in various formats ready to be adapted by other applications - for example, PDF, XLS, RTF, CSV, HTML and XML.

5.1.5 Disaster Recovery

A disaster recovery package consists of a license key for a backup server and documentation on how to go through the steps of reestablishing the installation. Packages are available for both Advanced server and Enterprise server.

5.1.6 SafeCom API

SafeCom's suite of APIs provides easy integration of their print solution into existing document systems, ERP and other applications.

SafeCom Administrator API is an XML-based tool that makes it possible to automate tasks and integrate SafeCom with other applications. The API allows SafeCom administrators to automate tasks that are typically handled manually. Import of users from other databases can be scheduled to take place automatically, or tracking data can be extracted at regular intervals - for example to an ERP-system. The API also exists as a dll that can be integrated into other programs.

5.2 Workstation Components

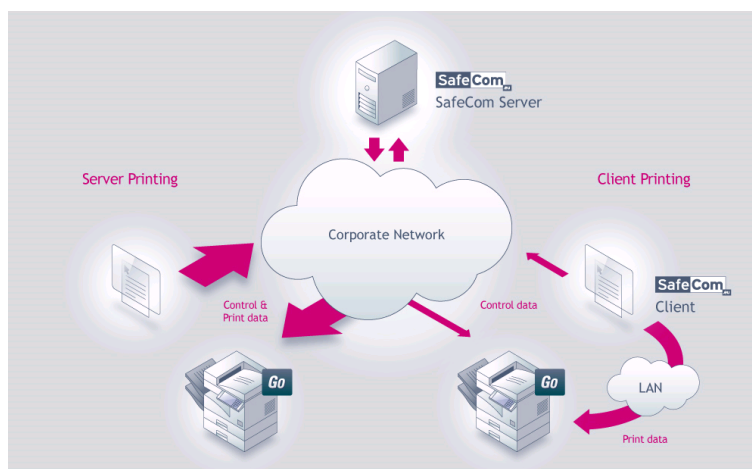
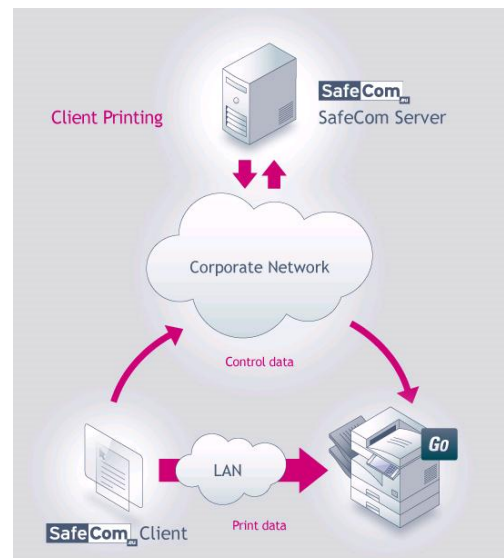
The workstation components are included in all SafeCom G3 installations and can be applied to some or all users.

5.2.1 SafeCom Print Client

Limited network bandwidth can be a barrier to the central administration of printers in remote sites.

Installing SafeCom Print Client on user's computers can minimize the need for network capacity since only control data travels over the corporate network. Pending documents are stored locally on the user's computer until the user authenticates and collects the print job at the local printer. All print data is removed from the corporate network. Only login and tracking information is sent to the central SafeCom Server.

Enterprises can combine server printing and the Print Client to include remote offices and optimize network and server load. Users in the main offices can use Server Printing while users in remote sites can use the Print Client for a smoother user experience.



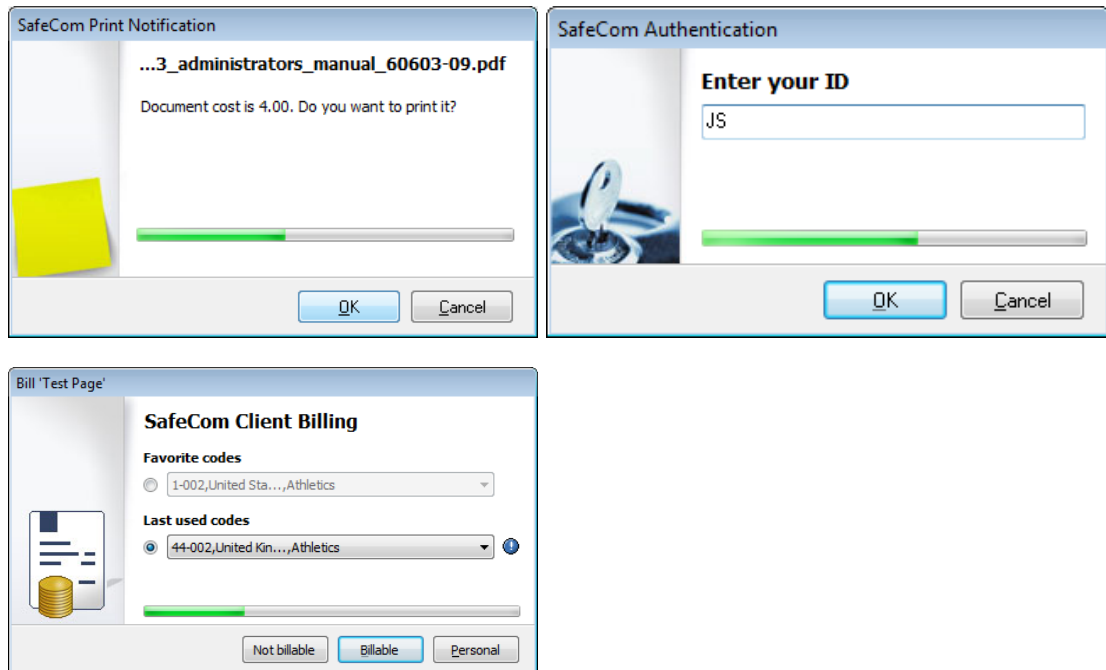
SafeCom combines the advantages of server printing and client printing.

5.2.2 SafeCom PopUp

The SafeCom PopUp is installed on the users computers and provides interaction with the user, for example print job confirmation, messages, or selection of billing codes.

The SafeCom Application Print feature must be installed on the print server to provide info to SafeCom PopUp running on user's computer.

Examples



5.3 Device Modules

SafeCom device features are licensed per print device and are described below.

5.3.1 SafeCom Pull Print



SafeCom Pull Print (Follow Me printing) is secure printing. Besides ensuring confidentiality, the introduction of SafeCom Pull Print can cut costs of paper and supplies by an estimated 15%.

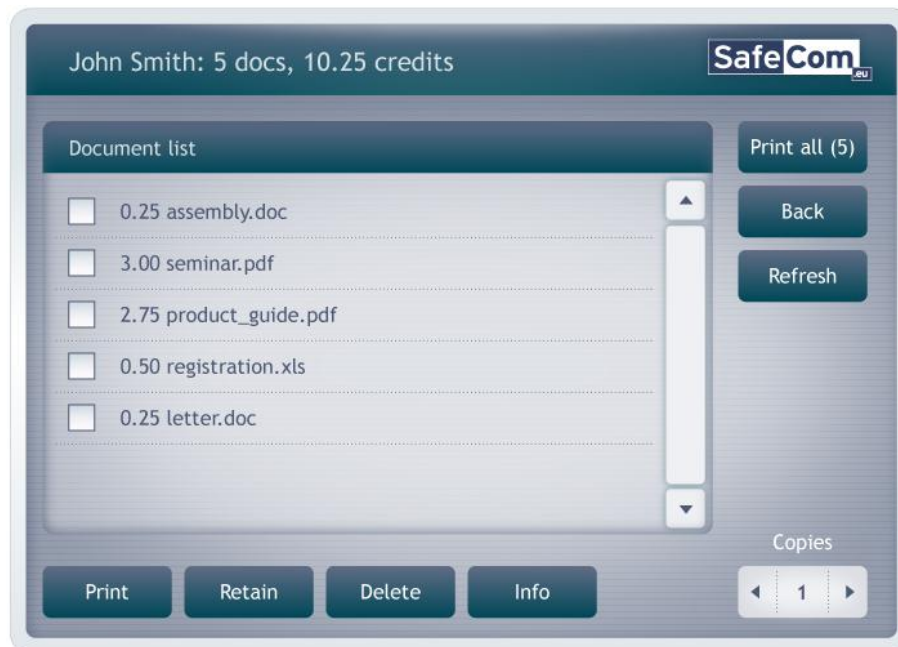
With SafeCom Pull Print, prints are not sent directly to the printer as with traditional Push Print (direct printing). When a user clicks Print on the PC, the document is sent to a SafeCom print server or remains on the user PC (Print Client). Either way the document remains encrypted until the user logs in at a printer or MFP with SafeCom and selects one or more documents to be printed.

A Pull Print enabled printer or MFP functions as a personal printer. Confidential documents are less likely to end up in the wrong hands, and employees do not have to rush to the printer to collect their documents before anyone else takes them. It puts an end to the piles of forgotten paper that typically end directly in the wastepaper basket.

Let the users decide

SafeCom Pull Print allows more flexibility and mobility. Rather than having to rush to the printer each time they click Print, users only go to the printer when they need their documents. Users can always go to the most convenient printer.

The user scenario



At the printer, users can select which documents to print or delete. Users can retain documents for later reprint, a feature that comes in handy if you have a specific document that you print on a regular basis.

Encryption is Standard

SafeCom Encryption is included with SafeCom Pull Print. It protects documents and data from being intercepted while travelling over the network. The SafeCom solution uses various encryption technologies (RSA, AES and TwoFish).

The SafeCom Pull Port application must be installed on all user PCs. The application encrypts the document before it leaves the PC and is sent to the print server. The encryption is not decoded until the document is loaded in the printer for printing.

5.3.2 SafeCom Tracking



SafeCom Tracking registers data on all print, copy, scan, fax and e-mail activities on supported network printers and MFPs. Detailed data is stored for each registered document, for example document owner, number of pages, duplex/simplex, toner coverage, color/mono and price.

Data is registered down to the individual user or department, providing important information on how companies control costs and optimize print services.

Tracking data can be displayed through SafeCom Reports and it can be used for the subsequent invoicing of departments, users or clients based on their actual printing and copying activities.

5.3.3 SafeCom Rule Based Printing



SafeCom Rule Based Printing helps with saving toner and paper on specified types of documents and applications. The administrator can set up rules and make sure that e-mails and web content are automatically printed in duplex and with toner save. Rules can also be set up to ensure that print jobs are always printed on the printer best suited hereby saving time and money and reducing waste.

The Rule Based Printing module is a tool that enables organizations to implement printing rules in accordance with company print policies.

The SafeCom Tracking module must be enabled before customers can run SafeCom Rule Based Printing.

5.3.4 SafeCom Client Billing



Companies that work with numerous customers and projects may wish to invoice customers for the actual costs involved within a project. It is often difficult to assess the actual costs without concrete data.

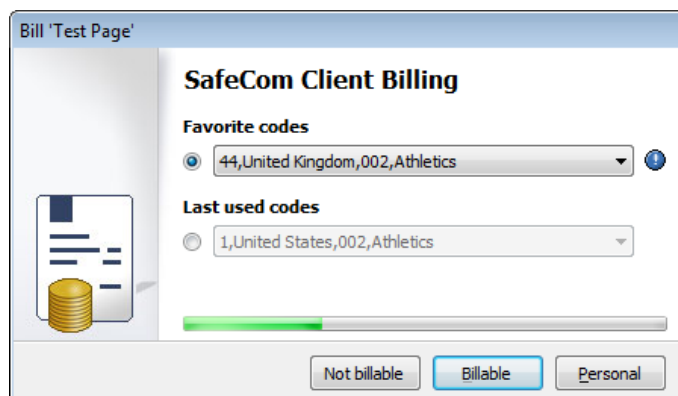
SafeCom Client Billing is a tool that provides business with a well-documented basis for invoicing customers for print and copy on a per project basis. Employees can print and copy as always with SafeCom, but at some point they will be asked to assign a billing code to the job:

- At print submission time through a PopUp
- After printing through the Web Interface
- At the MFP before printing*

* This is currently available for SafeCom Go for HP and SafeCom Go for Sharp.

SafeCom Client Billing uses the data collected by the Tracking module, which is why Tracking must be enabled in order to run Client Billing. SafeCom Client Billing can be integrated with CRM or ERP systems through the Administrator API.

The user scenarios



Client Billing at print submission time

No billing code SafeCom

Select a billing code

- ☒ 001-002, Marketing, Germany
- ☐ 001-003, Marketing, France
- ☐ 001-004, Marketing, Design
- ☐ 002-007, Admin, Logistics
- ☐ 002-009, Admin, Facilities
- ☐ 003-010, Legal, Patent

Client Billing at the device

SafeCom John Smith (Logout)

Home | Documents | **Client Billing** | Setup

45, Denmark (billable)

☐ Use personal code ☐ Do not bill

Date	Type	Document name	Pages
<input type="checkbox"/> 02.10.09 15:02:14	PULL	--- safecom_g2_web_interface_administrators_manual_60602-27.doc	1
<input type="checkbox"/> 02.10.09 15:02:17	PULL	Microsoft Word - Document2	1
<input type="checkbox"/> 02.10.09 15:06:10	PUSH	Test Page	1
<input type="checkbox"/> 02.10.09 15:42:07	E-MAIL	invoice 2049	1
<input type="checkbox"/> 02.10.09 15:42:31	COPY	Copy job	1

Client Billing through the Web Interface.

5.3.5 SafeCom Pay



The SafeCom Pay feature is designed for educational institutions, libraries and other facilities wishing to charge users for print and copy without the need for cash. The feature ensures that no one can access print or copy without funds in his or her account. SafeCom Pay uses the information collected by the Tracking module, and therefore Tracking must be enabled.

Students can avoid standing in line in the printer room. As with all SafeCom Pull Print solutions students can walk up to any available printer, log in and print their documents. Users of the print facilities can deposit money on their accounts in various ways depending on what the institution chooses to offer:

- Around the clock over the Internet with SafeCom ePay and SafeCom Web Interface. It requires that the institution enters into an agreement with an external payment gateway provider
- Through a SafeCom Money Loader (wall mounted money deposit box) on campus.
- At the manned administrator function (Cashier) on campus.

It is possible to combine user payment with fixed quotas. Quotas can be assigned automatically each week, month or year.

6 Support Service

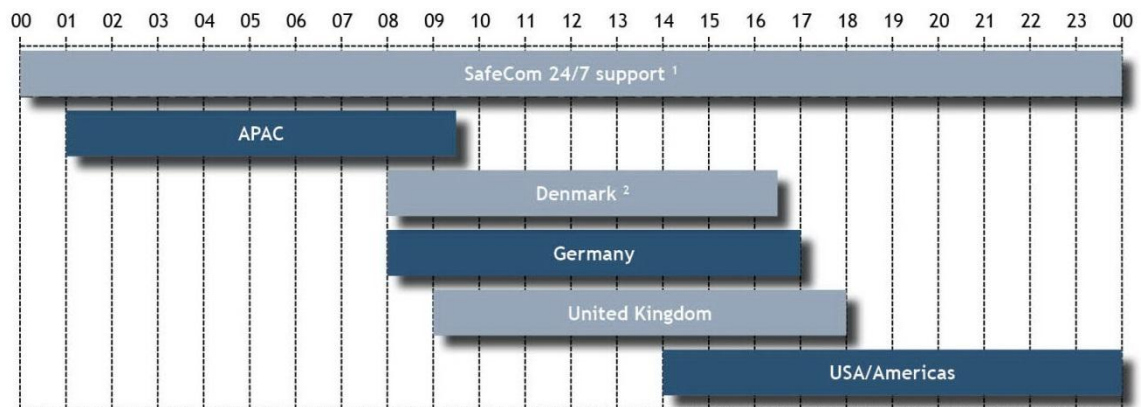
SafeCom support Service is provided to customers through SafeCom certified partners. The local partner acts as the single point of contact for SafeCom customers regarding their SafeCom installation. SafeCom Support Service ensures that SafeCom installations are always up to date and supported in the best possible way.

SafeCom Support Service is mandatory the first year. However, anyone may prolong their maintenance and buy maintenance for longer periods of time. Please refer to the current pricelist and document D60102 "SafeCom Support Service" for more information about services and prices.

6.1 SafeCom support center

The SafeCom Support Center provides support to the SafeCom certified partner in cases where the SafeCom distributor is not able to solve the issues alone.

All SafeCom certified partners have an account in the web based SafeCom Support System, securing a speedy and documented process based on the procedures and support levels defined.



SafeCom support coverage GMT/GST +0.

7 Customers

SafeCom has more than 2500 named customers spread over the world. The customer base illustrates that any type of organization within any branch of business, private as well as public, can benefit from a SafeCom solution. Here is a selection of the companies that are already using SafeCom:

Healthcare

- Bonn University Hospital
- Penetanguishene Hospital

Education

- Brunel University
- Imperial College London
- IT-University
- Leeds Metropolitan
- Lund University
- Svendborg International Marine Academy (SIMAC)
- Aarhus State Library
- Strathmore University
- Teesside University
- Business College Denmark

Public and Government

- Government Agency (Denmark)
- State-owned organization (Denmark)
- Lancashire County Council
- Vereniging Nederlandse Gemeenten (VNG)
- East Renfrewshire Council
- Brabant Water

Finance and Insurance

- Financial Institution
- Latvijas Krajbanka
- Allied Irish bank

Service and Consulting

- Logica
- Steria Mummert Consulting
- Sydkraft Försäljning
- Turismo de Portugal

Manufacturing

- Nestlé Italy
- Nestlé Germany

Case studies about the above companies are available on the [SafeCom website](#) where new case stories will also be published.

8 Related resources

SafeCom provides related resources through the website www.safecom.eu and the partner site [SafeCom Insite](#) (this requires a personal login and password).

Brochures

SafeCom has produced brochures that are available as PDF documents on [SafeCom Insite](#):

Enterprise Smart Printing

4 page brochure that introduces the basics of SafeCom.

SafeCom Smart Printing - Product Overview

8 page brochure presenting the modular SafeCom solution.

Smart Printing for Financial Services

4 page brochure presenting the SafeCom solution for financial services.

Smart Printing for Higher Education

4 page brochure presenting the SafeCom solution for educational institutions.

Smart Printing for Public Service

4 page brochure presenting the SafeCom solution for public services.

Decision Support Documents

Three documents that step-by-step pinpoints the customer's challenges around print management and document handling.

Datasheets

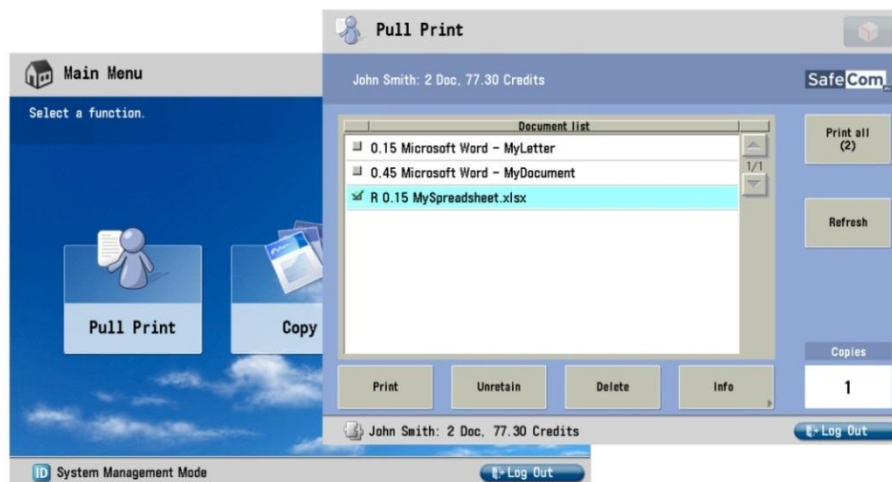
Use the datasheets for a more in-depth description of the individual SafeCom products. All datasheets are available as PDF documents on the [website](#).

Supported Devices

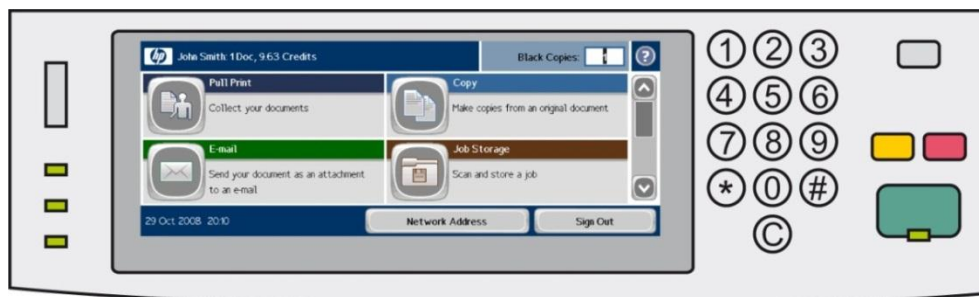
An up-to-date list of supported devices is available on the SafeCom [website](#).

9 SafeCom Go User interfaces per printer vendor

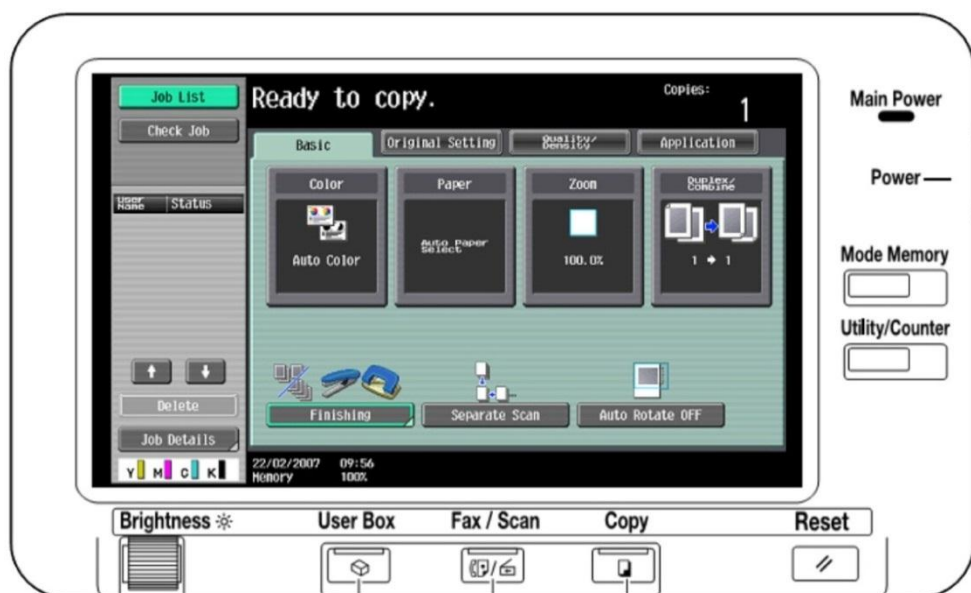
SafeCom Go for Canon



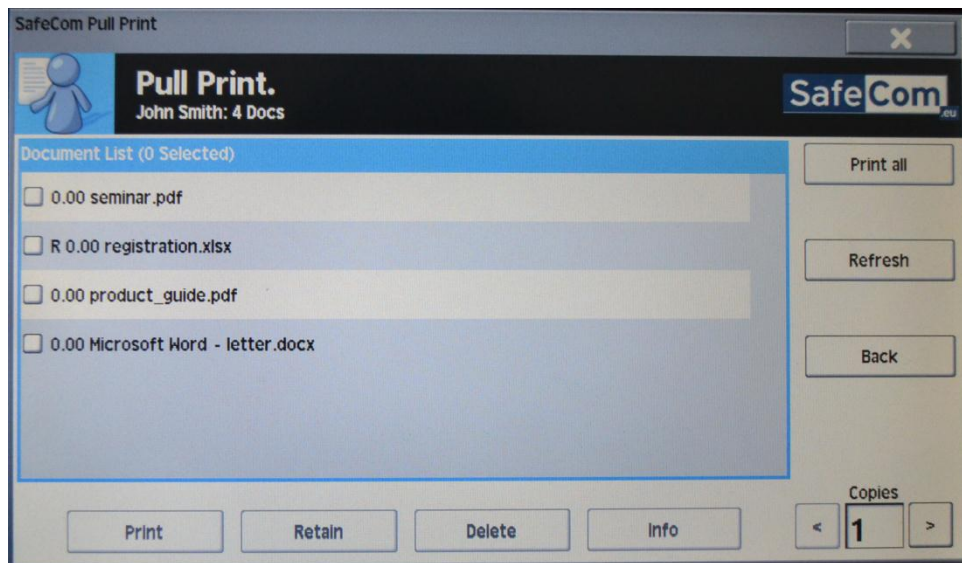
SafeCom Go for HP



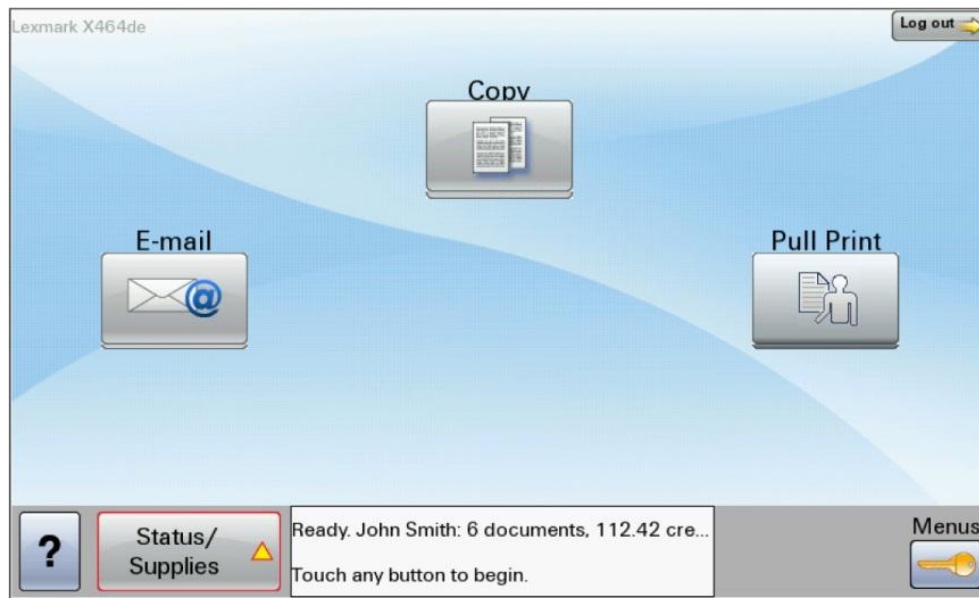
SafeCom Go for Konica Minolta and Océ



SafeCom Go til Kyocera




SafeCom Go for Lexmark



SafeCom Go for Ricoh



SafeCom Go til Samsung



John Smith: 5 documents, 35.00 credits

SafeCom.eu

Print all (5)

Logout

Refresh

Copies

1

30.10 Microsoft Word - assembly.docx	<div>▲</div> <div>▼</div>
2.60 Microsoft Word - letter.docx	
20.10 product_guide.pdf	
2.60 registration.xlsx	
20.10 seminar.pdf	

Print

Retain

Delete

Information

SafeCom Go for Sharp

Pull Print

Print All

Back

John Smith: 3 Docs. 10,50 Credits

R 1.10 MySpreadsheet.xls	1/2
1.50 Microsoft Word - MyDocument.doc	<div>■</div>
1.10 Microsoft Word - MyLetter.doc	<div>■</div>
2.20 Microsoft Word - MyProposal.doc	

Print

Retain

Delete

Info

Copies: 01

SafeCom Go for Xerox

Pull Print

John Smith: 5 Docs, 100.00 Credits

Document List
8.00 SafeCom Administrator Manual.pdf
1.00 Untitled - Notepad
4.00 MySpreadsheet.xls
3.60 Microsoft Word - Safecom1.doc
1.20 Microsoft Word - My Letter.doc

Print All

Refresh

Back

Print

Retain

Delete

Info

Copies

1