

A completely integrated  
**Print Management Solution** giving you **control**  
over who is printing **what, when** and **where.**



OCM XCM Business Solutions



**OCM International**  
*Device Management Made Simple*



SAMSUNG Printing Solutions  
Strategic Alliance



A **central device management solution** that helps customers to realise **full cost management potential seamlessly integrated** within the **versatile Samsung development platform**.

### Business Process Optimisation

#### Solution Overview



Many organisations are recognising the financial and environmental impact of unmanaged print environments. Escalating print costs are a consequence of fragmented purchasing and ownership of printers and copiers and the associated consumables. Lack of print management tools mean organisations often have no control over who is printing what, where and when. And while many organisations may have invested in sophisticated Multi-Function Devices (MFD's), very few exploit their full capabilities as document capture and management consoles.

In today's business climate the need to optimise the usage of key applications and hardware within all types of business – is critical whether they are a large global enterprise or a small/medium local business. Organisations are now looking at ways of improving processes and how they can make the most of their resources. Increasing scrutiny within document intensive processes, security, access and cost has led to the development of complete integrated solutions rather than single point products.

As a result, printer and copier manufacturer Samsung are placing increasing emphasis on the benefits of integrated enterprise cost management solutions which can actually help minimise wasteful printing, as well as managed print services (MPS) which can result in cost savings, often without the need for upfront capital investment.

OCM is an International Company specialising in bespoke end to end Output Cost Management business solutions. Using Samsung's flexible and powerful new open platform **eXtensive Open Architecture (XOA)** OCM was invited to develop a Samsung specific user friendly embedded document output management solution. Time served expertise with track proven industry solutions OCM embraced this Global Alliance Partner request. Engineering OCM's innovative Web Based Device Management Software together with Samsung's XOA embedded device management smarts, **OCM XCM** was developed and launched as an exclusive industry leading Cost Recovery Solution that simply offers you the advantages of ease-of-use, productivity, efficiencies and increased savings in ways that no other can match.



### OCM XCM Simplifying Business

#### Central Management



OCM XCM embedded device management solution with web based central management really helps customers to realise the full cost management potential seamlessly integrated within the versatile Samsung development platform. Whether you are a corporate body, professional service (legal / CA) or tertiary customer, the OCM XCM Web console can easily be configured to meet your specific billing and cost recovery requirements. The OCM XCM management solution transforms your Samsung XOA multi-function device into the hub of an adaptive infrastructure for accurate cost management, secure print with mobile secure print release and broad-based fleet management throughout an entire organisation.

## Corporate Social Responsibilities

### Data Security Act



Further data protection has been legalised through the Data Protection Act of 1998, which is an updated, revised version of the Data Protection Act of 1984. In it, personal data is defined as information that can provide a living individual's identity as well as included any expressions, impressions, opinions, or intentions towards or about the individual from the data controller. This includes health, educational, or social services records where common confidentiality laws apply, as well as do the assumptions that an individual was not misled or deceived into giving the information.

Throughout the many principles and conditions outlined by the act for the lawful processing of personal data, the reiteration for the need of common sense in information handling is apparent. Businesses and institutions should keep secure information accurate and up to date, only for their specified purpose or intent, and should always err on the side of caution before releasing any data.

### Environmentally Friendly



Increased demand for IT capacity to support business growth, increased energy use, rising energy costs and environmental concerns are fueling the need for an energy efficient infrastructure – within the corporate workplace and beyond. Building an infrastructure that is green and energy efficient is not only important strategically, but it is equally important to help meet operational goals and satisfy marketplace expectations and demands. As organizations seek new ways to become more energy efficient and environmentally aware, managing and reducing energy consumption and green house gas emissions not only helps the environment, it makes for good business.

Document production has a wide-ranging environmental impact. With OCM XCM's output cost management solutions, you can reduce consumption of natural resources and the volume of non-recyclable materials that end up in landfills. OCM XCM software can provide the information you need to take advantage of environmental credits and work toward achieving your organisation's sustainability objectives.

#### Importance of Data Protection

There is a large market for personal information in the current marketing world, and often times it is for illegal, or at the least, undesirable uses. In a business, governmental institution, or health organization, information is the most important asset. Codes, passwords, and security software are valuable safeguards against third party informational requests or violations. Protecting, securing, and maintaining the integrity and confidentiality of personal data should be the highest priority of any business or organisation in order to maintain customer relations and adhere to legal standards.

IT asset managers and their organisations should manage print in a proactive way as ensuring a secure printing environment is key for any enterprise regardless of its size and maturity. Security of printing and document capture environments is an integral part of the company overall security strategy.

#### Preventing loss

Preventing data loss, corruption, and disclosure can be a daunting and expensive task experienced by any IT Manager. Computer programs or even entire technological security companies can be employed to design software and other security applications. With the introduction of 'smart' digital multi-functional devices, the user has readily access to a system offering a host of functions and features. OCM XCM Follow Me Secure Print allows end users to have the benefit of printing to a shared network attached print device but knowing that their documents are completely secure until they release them to print to a printer or multifunction device of their choice.



## OCM XCM Fleet Management

### Device Management



OCM XCM Click Tracker Software allows you to manage an end-to-end view of your IT infrastructure an integrated approach to resource allocation, monitoring and provisioning as well as problem prevention and resolution. OCM XCM Click Tracker enables the automation of repetitive IT tasks and processes, and deliver optimized resources in real-time to address changing business demands and to meet service level agreements.

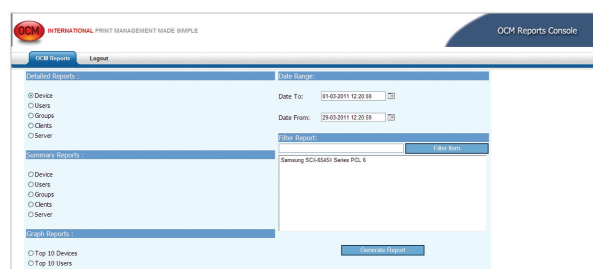
- **Improve asset-related decision making**
- **Increase asset service delivery responsiveness and revenue**
- **Facilitate regulatory compliance efforts**
- **Lower total cost of ownership**
- **Improve return on assets**
- **Decrease costs and risk**
- **Increase productivity**



### Advanced Reporting Feature



OCM XCM's Web Report Management Console includes a comprehensive web based reporting instrument which presents your business with clear visibility of its document production and workflow costs. At a touch of a button you can generate detailed reports; auditing / measuring user, device, server, client activity. These reports are all instantaneous, where the report is based upon the most recently generated user activities captured by the OCM XCM XOA device auditor. The captured data can be exported in several difference formats including MS Word, MS Excel, HTML and PDF.



#### Document Output Auditor

OCM XCM's Print Server Auditor is a revolutionary integrated document auditing solution that allows an administrator to monitor and manage the use of all printers and multi-function devices throughout an entire organisation, regardless of device being locally attached or network asset. OCM XCM is a web based user interface developed on Microsoft's latest .NET technology which seamlessly integrates into any Microsoft Windows environment. From singular > hundreds of print server environment and regardless of geographic location; various cities or countries, OCM XCM can provide a total turnkey solution for recovering all associated document output costs.

#### Rules Based Printing

OCM XCM's Rules Based Print Manager is a revolutionary integrated print management system, which offers the network administrator the ability to manage print output from locally attached / low-end networked printers to recognised cost effective devices, introducing the ability to maximise printer / cost efficiency. Dependent on user permissions, selected end users can have the option to override administrator rules based settings allowing the end-user to release the print job, however the user will be informed that this was not the most appropriate device to print the application on.

#### Audited Data

- **Date & Time**
- **Mono / Colour Breakdown**
- **Total Number of Pages**
- **Auditing Group**
- **Auditing Code**
- **User Name**
- **Current Balance**
- **Minimum Balance**
- **Billing Code**
- **Print Device**
- **Job Time**
- **Job Date**
- **Job Name**
- **Print Server**
- **Cost Per Page Mono / Colour**
- **Number of Pages**
- **User ID**
- **Total Cost**

### User Authentication



OCM XCM is compatible across a wide range of authentication options all of which OCM XCM can integrate with your existing user - ID security identification procedures, this can include:-

- **PIN entry**
- **Magnetic Card**
- **Proximity Card**
- **SMART card**
- **Bio Metric**

Once the user has been identified by OCM XCM, they can start copying, faxing or scanning or select one of their private print jobs from their personal secure print queue. All jobs can then be accounted to the correct user, department or cost code.



### Permissions



OCM XCM Embedded Solutions offers the administrator the capacity to manage and restrict/permit individual user/device functionality based on corporate and/or departmental policies..

- **Restrict MFD Access**
- **Restrict Colour Usage**
- **Usage Allowance**
- **Restrict External Memory Scan/Print**

### Benefits of OCM XCM Log-On



- **Improved User Productivity**
- **Cost Reduction**
- **Device Utilisation**
- **Permission Rights**

- **Live Interface to Active Directory**
- **Management & Reporting Usage**
- **Confidentiality**
- **Compliance**



### OCM XCM Secure Printing Solutions

#### Follow Me Secure Print



OCM XCM Follow Me Secure Print or can be commonly known as 'Pull Printing', allows end users to have the benefit of printing to a shared network attached print device but knowing that their documents are completely secure until they release them to a networked printer or multi-function device of their choice. By implementing OCM XCM Follow ME Secure Print companies will experience immediate Return of Investment (ROI) in decreased printing costs (e.g. money spent/device; ratio user/device and user/printing supplies (paper and ink); staff; maintenance) IT Administrators can significantly reduce organisations' use of paper, saving up to 20 % in printing consumables. Gartner calculated that organisations can save 10 % to 30 % of their office print spending.



#### Solution Overview



OCM XCM as standard includes OCM's 'Enterprise Manager Print Release Software' which offers users the huge benefit of sending their print job to their own dedicated secure print queue. Logging-on at any Samsung XOA ready networked device presents user(s) with all print job(s) being held in their secure queue, simply by selecting job(s) to be printed the MFD will then release the documents. Should user(s) encounter default device to be "busy/off-line", you can simply walk directly to another XOA ready networked device to automatically "release" secure job(s) without the time consuming need to resend the print job. All secure documents released for printing are automatically audited with the option of charging back by client, cost centre or project code.

#### OCM XCM Secure Print MFD Display



OCM XCM's pioneering embedded solutions helps customers realise the full cost management potential, which seamlessly integrates within the multifunction device user display panel, this embedded technology transforms a multi-function device into the hub of an adaptive infrastructure for accurate cost management, secure and mobile print release, and broad-based device management throughout your organisation.

##### Benefits of OCM XCM Secure Print

- Access confidential jobs from any Samsung XOA ready device, even in a different building, city or country
- Select and print documents from a public or private archive
- Huge reduction in print waste
- All documents are audited and tracked
- Print and delete selected jobs
- Achieve compliance (e.g security audits against standards such as IS27002 / PCI DSS)

##### Confidential & Private Documents

We spend a fair amount of time making sure that our computers, documents, and private information are all kept secure. But all that time and energy can be for naught if you share a network printer.

Prevent private or sensitive materials from sitting unattended and unclaimed at remote printers, a hot spot for confidential information, lying in a pile at the printer, patiently waiting for you (and everyone else) to pick it up.

OCM XCM Follow Me Secure Print with Secure Document Release holds documents in a secure server and outputs them only when users authenticate themselves at their printer of choice.



## OCM XCM Cost Recovery Solutions

### Cost Recovery



In today's complex distributed computing environment maintaining control of resource usage and costs is a constant challenge. By having access to OCM XCM's flagship document auditing suite, you will immediately have full cost recovery including the ability to bill back all document workflow; printing, copying and scanning which can help your organisation to operate more efficiently, maximise device utilisation while providing additional management control such as follow me secure print.

### Client Matter Billing



Through increased centralised device management; which offers printing, copying, faxing and scanning, a high proportion of documents distributed within the 'Legal Sector' are not accurately managed or in turn accurately billed back to [clients]. Latest figures indicate that at minimum 30% of all document workflow is chargeable Client Matter, if this could be automatically captured and accurately billed to 'your' clients, what increased value to your bottom line would this mean to 'you'? Time consuming document processing and client disbursement actions which inevitably become a 'cost centre', can now be fully automated introducing business enablers coupled with increased profit margins".

OCM XCM introduces simplified cost management efficiencies with the ability to bill back all scan, print, photocopy and fax workflows by a specific client, division or cost centre. The user-friendly Graphical User Interface (GUI) ensures all jobs are automatically prompted for the operator to key in a specific cost centre number; choose from a divisional code or even a project code. All document workflow is intuitively billed back to the selected billing option.

Once captured the billing data can be displayed on a cost recovery report which includes date/time, workflow type, amount of pages, individual document costs while more importantly one total output cost.

24-02-2011 11:30 AM (ID: Administrator)

Client Billing: User: Administrator / Client Code: 0002100 / Matter Code:

Client Code	Client Description
0002100	Account
0002101	Sales
0002102	Purchasing
0002103	Manufacturing
0002104	Reception
0002105	Customer Services

### OCM XCM Tertiary

OCM XCM allows you to discover and recover all document output costs by Staff and Student. By installing OCM XCM in your institute you can immediately create and administer an electronic Debit Account for each Student and / or Department, enabling you to recover the cost of every sheet of paper outputted throughout the campus.

### OCM XCM Cost Recovery Benefits

- Ease-of-Use Client Matter Billing
- Simplified Time Disbursement Billing
- Simplified Reporting
- Increased Efficiencies / Productivity
- Increased Profit Centres
- Introduced Control / Management
- Automation

### CRM / Accounts Integration

OCM XCM has optional connectors which gives you the ability to seamlessly interface the OCM XCM Client Billing Software into your existing client time disbursement application/platform, allowing central management of all your clients disbursements; work matter and bill-back options, avoiding duplication of client details while accurately and efficiently uploading job / account total cost which simply means quicker turn-around times sending your invoices, which in turns means being paid quicker.

### OCM XCM Cost Recovery Options


- Client and Client Matter Billing
- Cost Centre and Project Code Billing
- Student Billing
- Bill-Back by Department and Work Group
- Bill-Back by Customer Name and Project
- CRM / AP Connectors

OCM introduces advanced reporting tools which through comprehensive capture capability will provide your business with clear visibility of its document production and workflow costs.

# Integrated cost management solutions

which can actually help **reduce wasteful printing.**

## OCM XCM Features at a Glance

	<b>OCM XCM Central Management Console</b>	Management of all Users, Devices and Audit Groups Global device settings Automated capture of new devices & Users
	<b>Audit Reports</b>	user, device, client, group, server, PC Customised Reports Seagate Crystal reports compatible Export data to billing system
	<b>Photocopy auditing</b>	Swipe & PIN Photo copy by billing codes
	<b>User Card Technology</b>	Magnetic Card Track 1,2 and 3 SMART / Barcode/Proximity/Swab/MIFARE/Biometric
	<b>Secure Print Release</b>	Release Viewer Server based Security Release at any multifunction device Scheduler for deleting print jobs
	<b>Client User Imports</b>	Active Directories /CSV / Batch File
	<b>Charge - Back</b>	Departments /Groups / Billing Codes / Client Matter
	<b>User Billing</b>	No charge Allow negative balance Initial and Minimum balance User Notification and Lock Down User
	<b>Follow Me Secure Print</b>	Display Document Name Management of Colour and Mono Secure Documents Options: Print one job or all jobs Choose Multiple Copies Option Print and Save Option Audit all Secure Documents Secure Print User Authentication Secure Print Management including Auto Delete Timer
	<b>Operating Systems Supported</b>	Windows 2003 (32/64 Bit) Windows 2008 (32/64 Bit)
	<b>Required Server</b>	- Minimum 4GB RAM. - Minimum 20-30 GB free space on C-Drive. - Gigabit Ethernet
	<b>Languages Supported</b>	English / French / German / Spanish / Italian / Portuguese
	<b>Product Support</b>	OCM Technical Support Library Online reference guides and Tech support Online user training / tutorial

*The above is a summary of the features and functions supported by OCM XCM and is not limited to the list of features displayed.*

## Contact details



**OCM International Limited**  
Parkshot House, 5 Kew Road  
Richmond, TW9 2PR  
United Kingdom  
**Telephone:** +44 20 8334 7089  
**Email:** sales@ocmplc.com  
**Web:** www.ocmplc.com

**Samsung Electronics Europe**  
Samsung House  
1000 Hillswood Drive  
Surrey  
KT16 0PS  
United Kingdom  
**Sales:** E-mail: pssupport@samsung.com

Your local Samsung subsidiary:

Printing solutions  
as easy as

